

Figure B.13: Estimated scaled covariate effects for *Bimodal* data and of the models with linear predictor

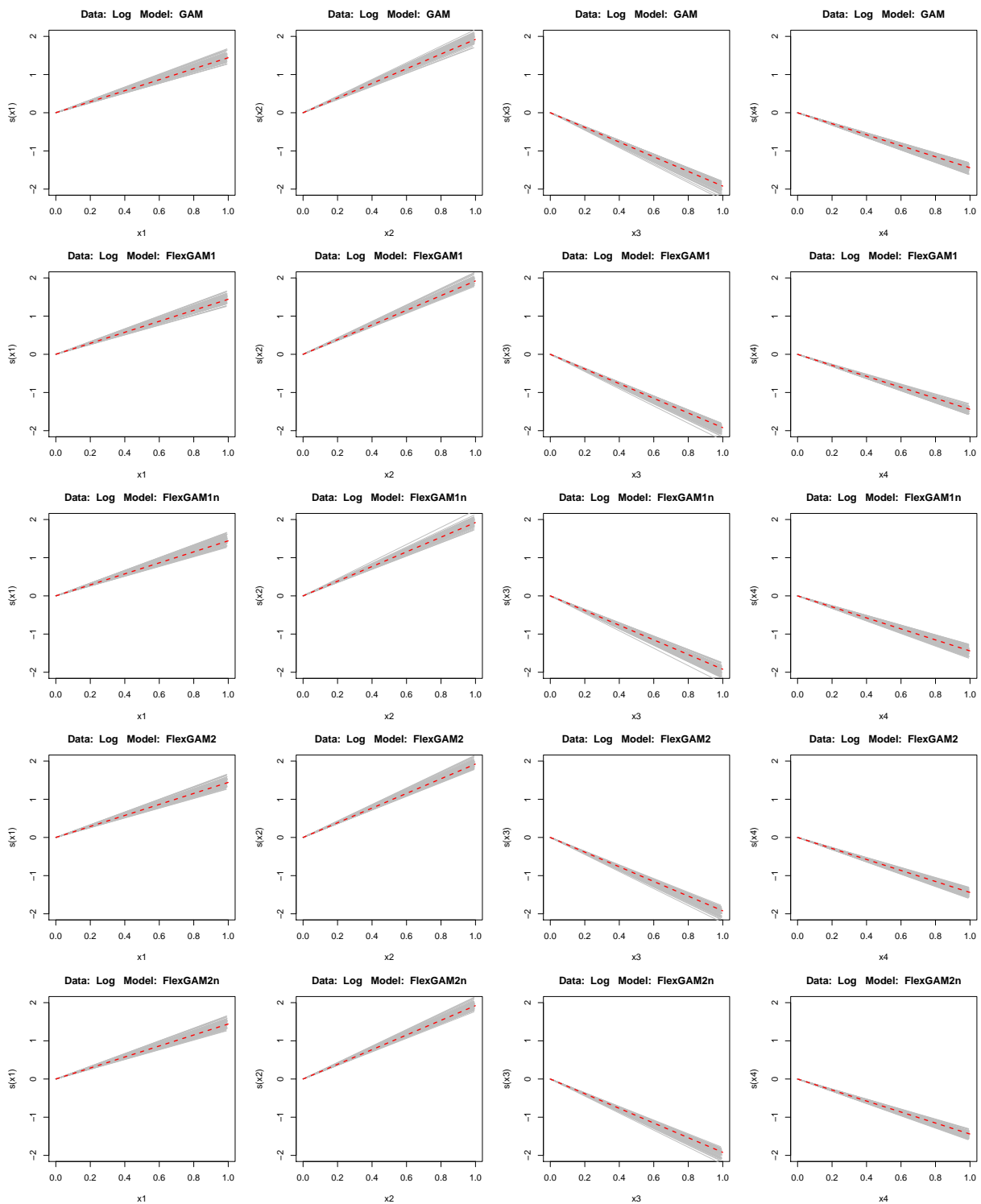


Figure B.14: Estimated scaled covariate effects for *Log* data and of the models with linear predictor

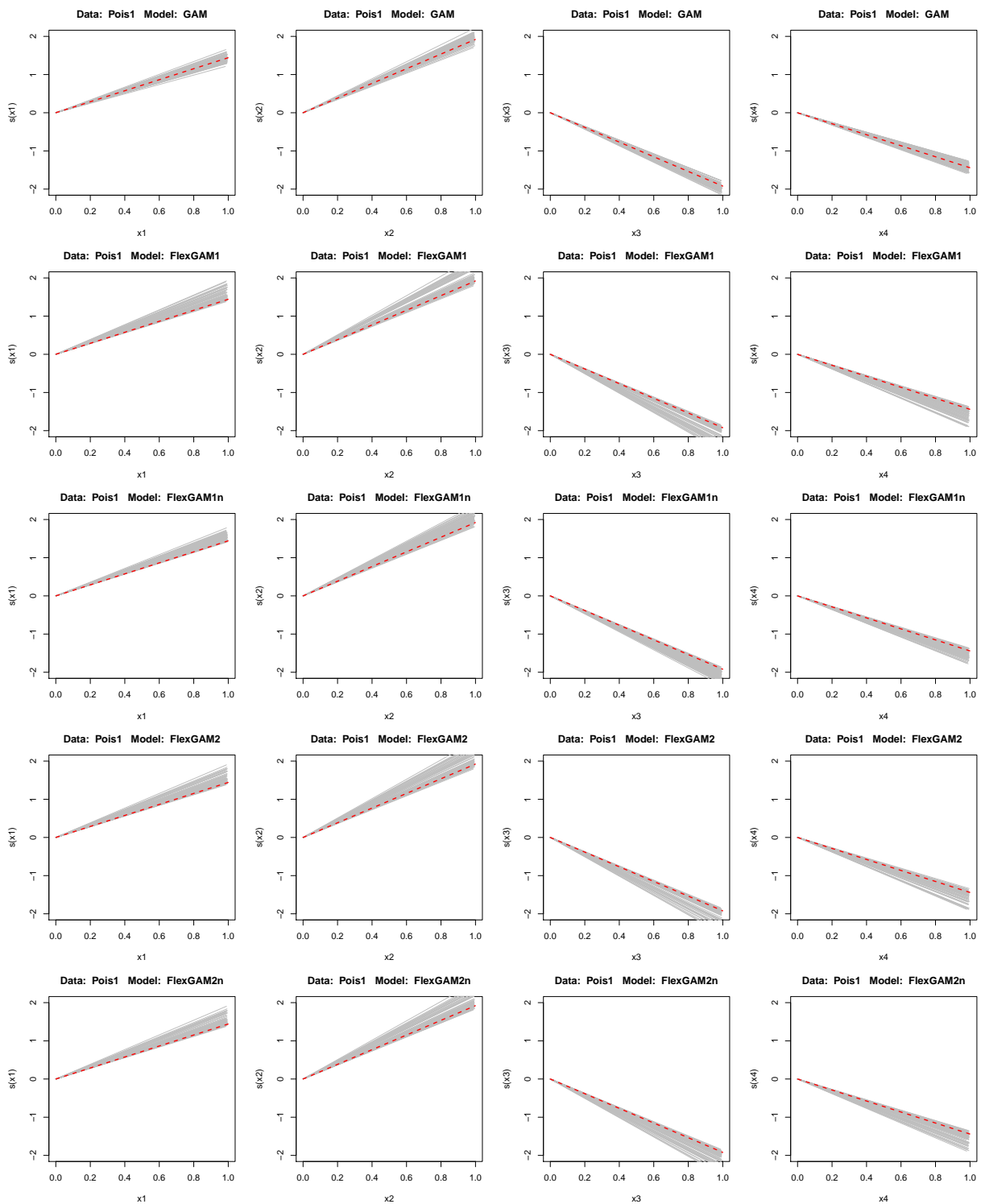


Figure B.15: Estimated scaled covariate effects for *Pois1* data and models with linear predictor

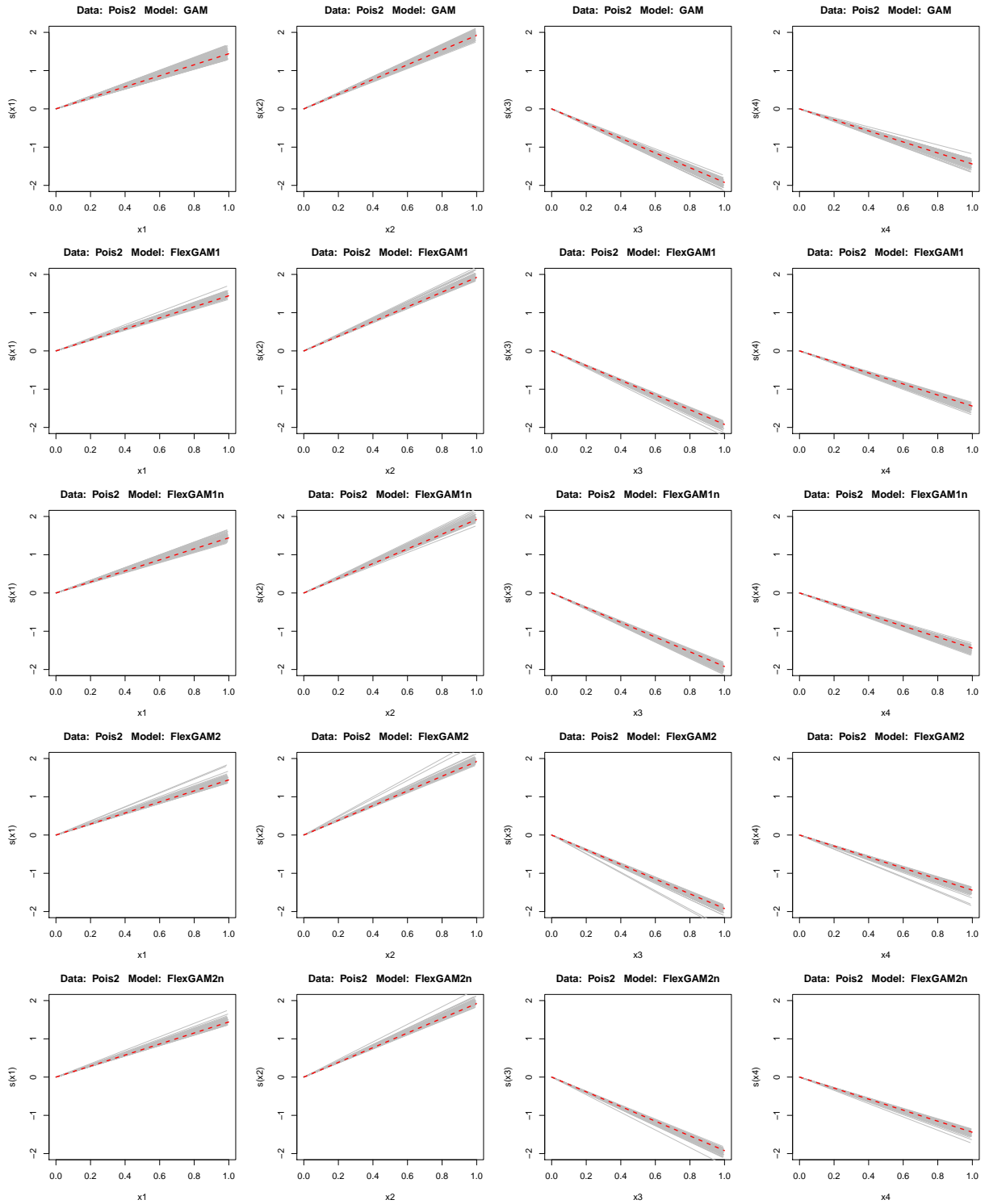


Figure B.16: Estimated scaled covariate effects for *Pois2* data and of the models with linear predictor

B.1.4 ROC-Curves

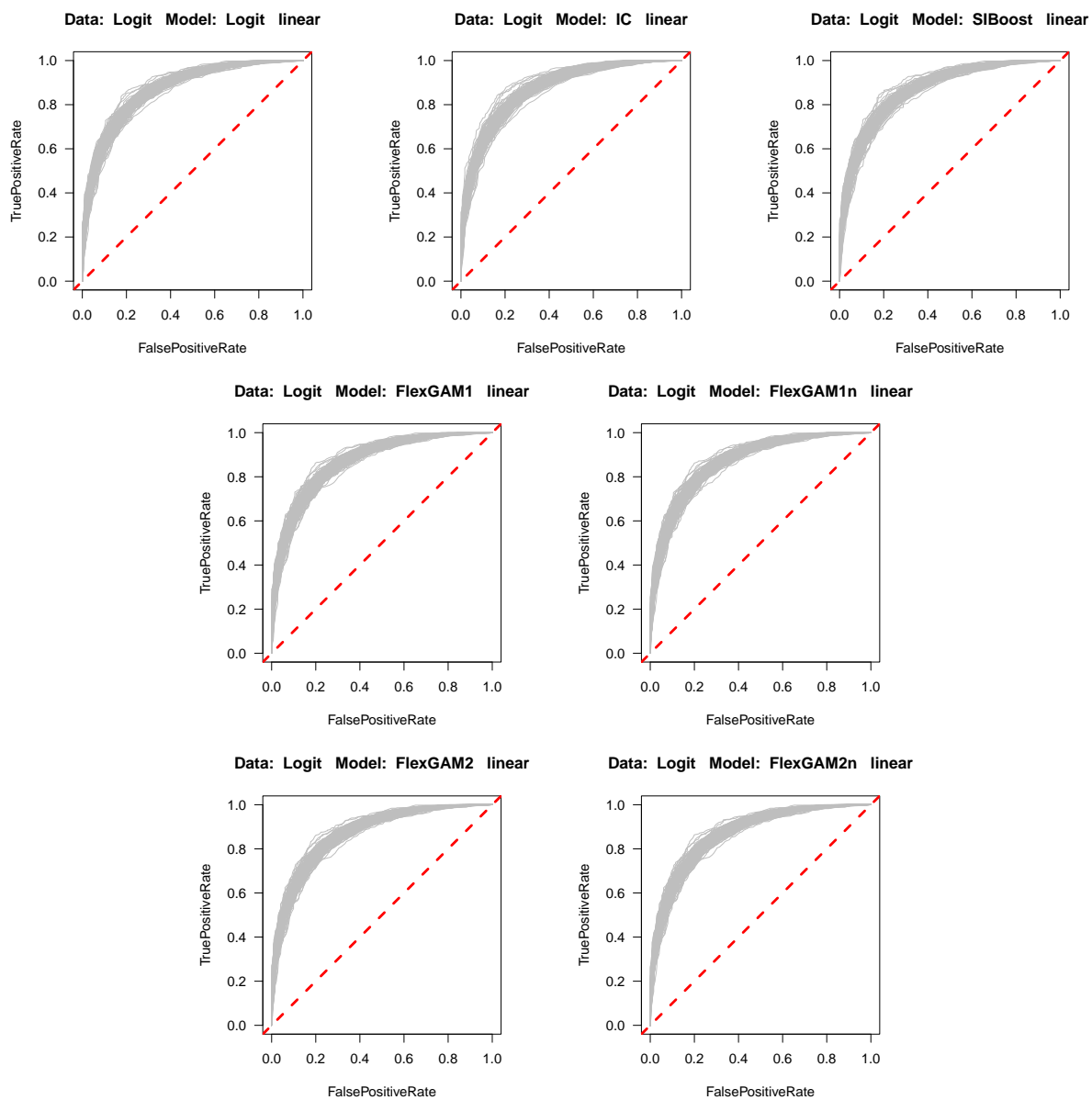


Figure B.17: Estimated ROC curves for *Logit* data and of the models with linear predictor

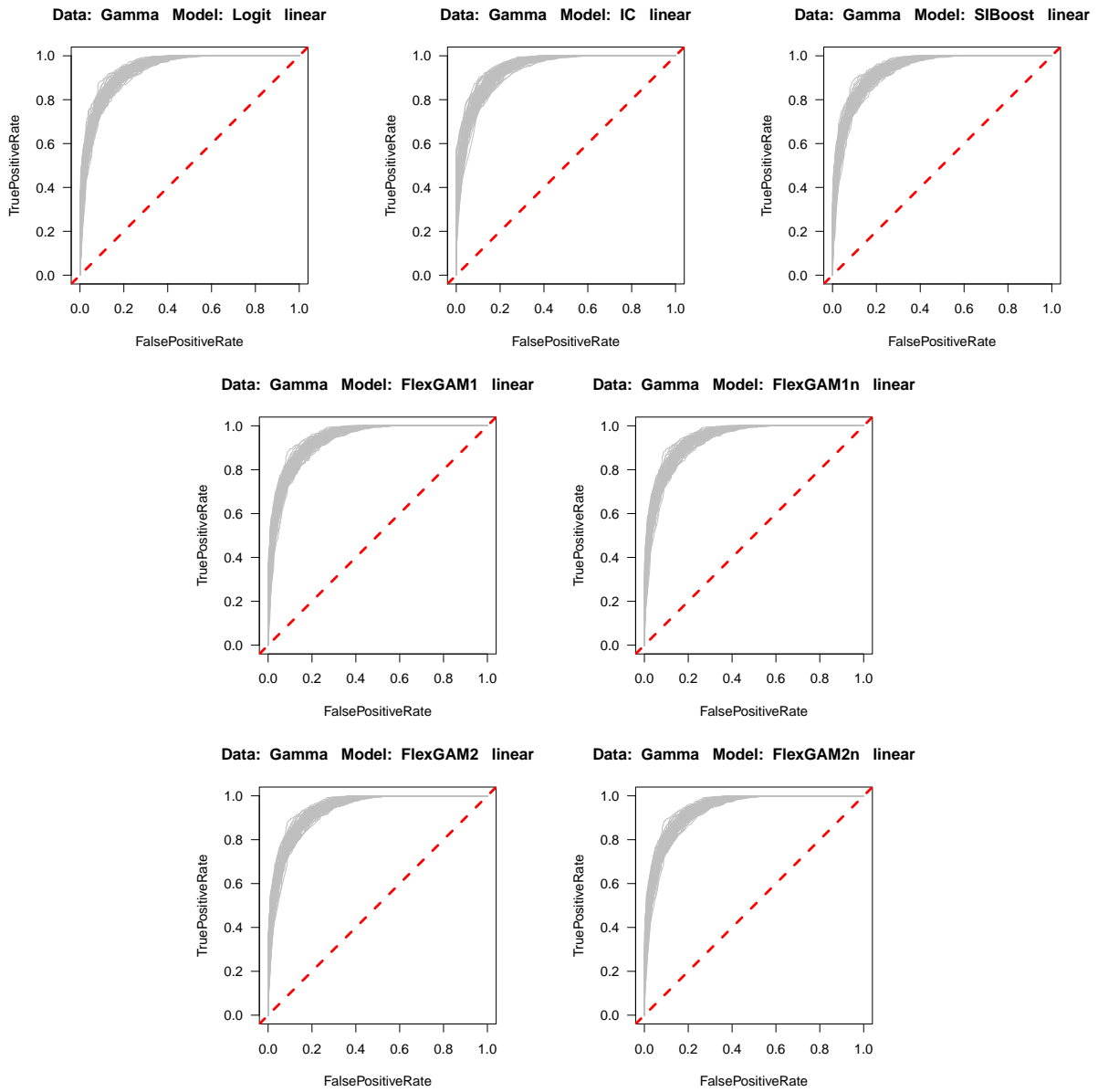


Figure B.18: Estimated ROC curves for Γ data and of the models with linear predictor

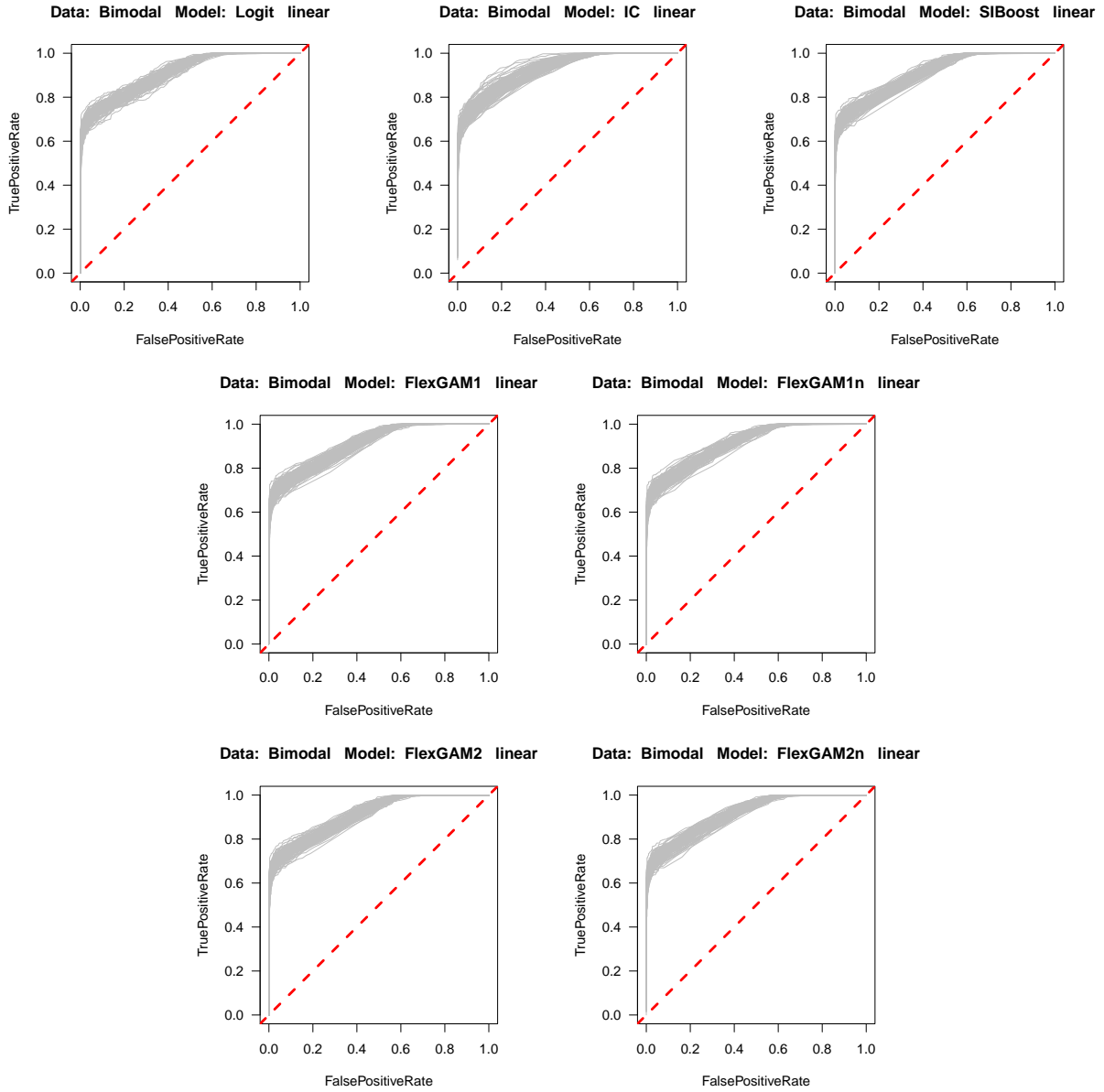


Figure B.19: Estimated ROC curves for *Bimodal* data and of the models with linear predictor

B.2 Smooth Predictor

B.2.1 Goodness-of-fit

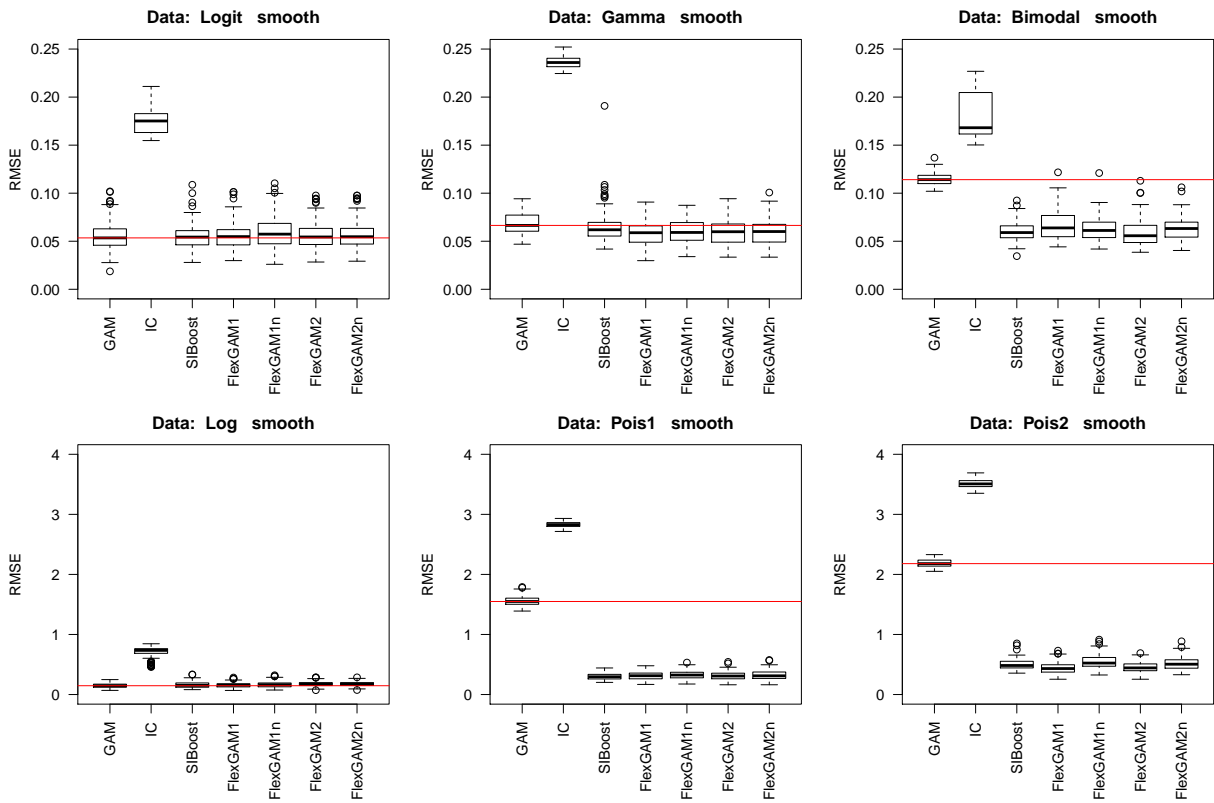


Figure B.20: RMSE of the models with smooth predictor

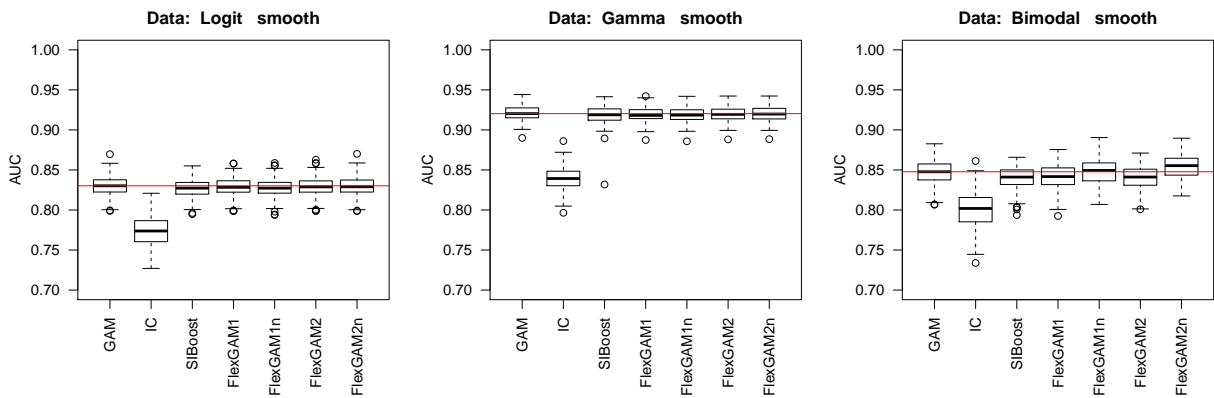


Figure B.21: AUC of the binomial models with smooth predictor

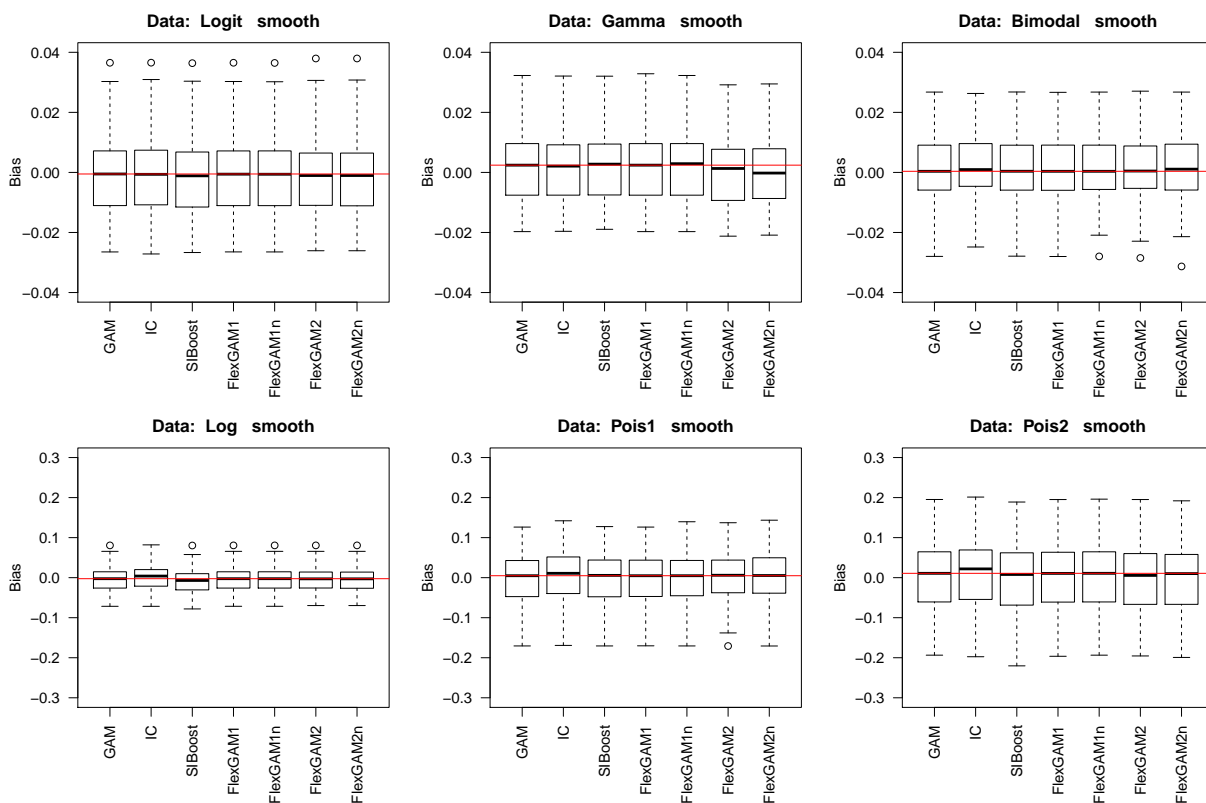


Figure B.22: Bias of the models with smooth predictor

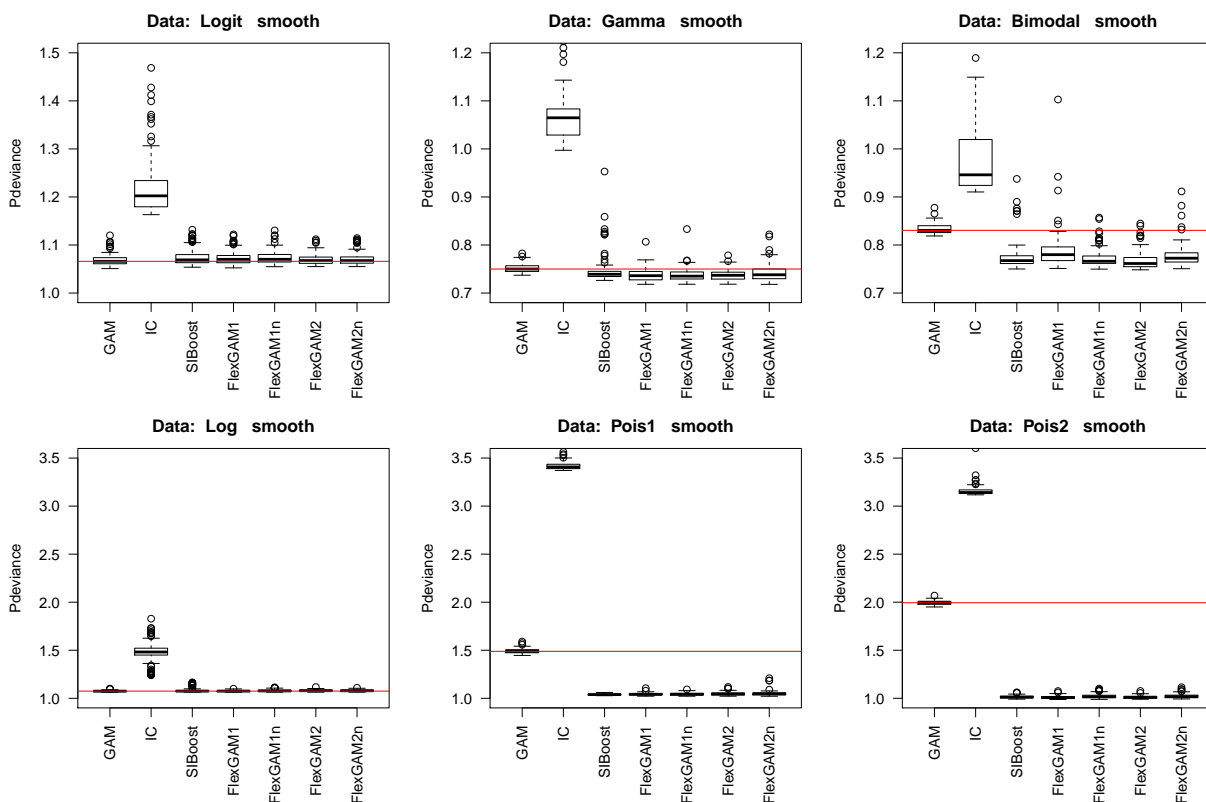


Figure B.23: Predictive Deviance of the models with smooth predictor (scaled by 10000)

B.2.2 Estimated Response Functions

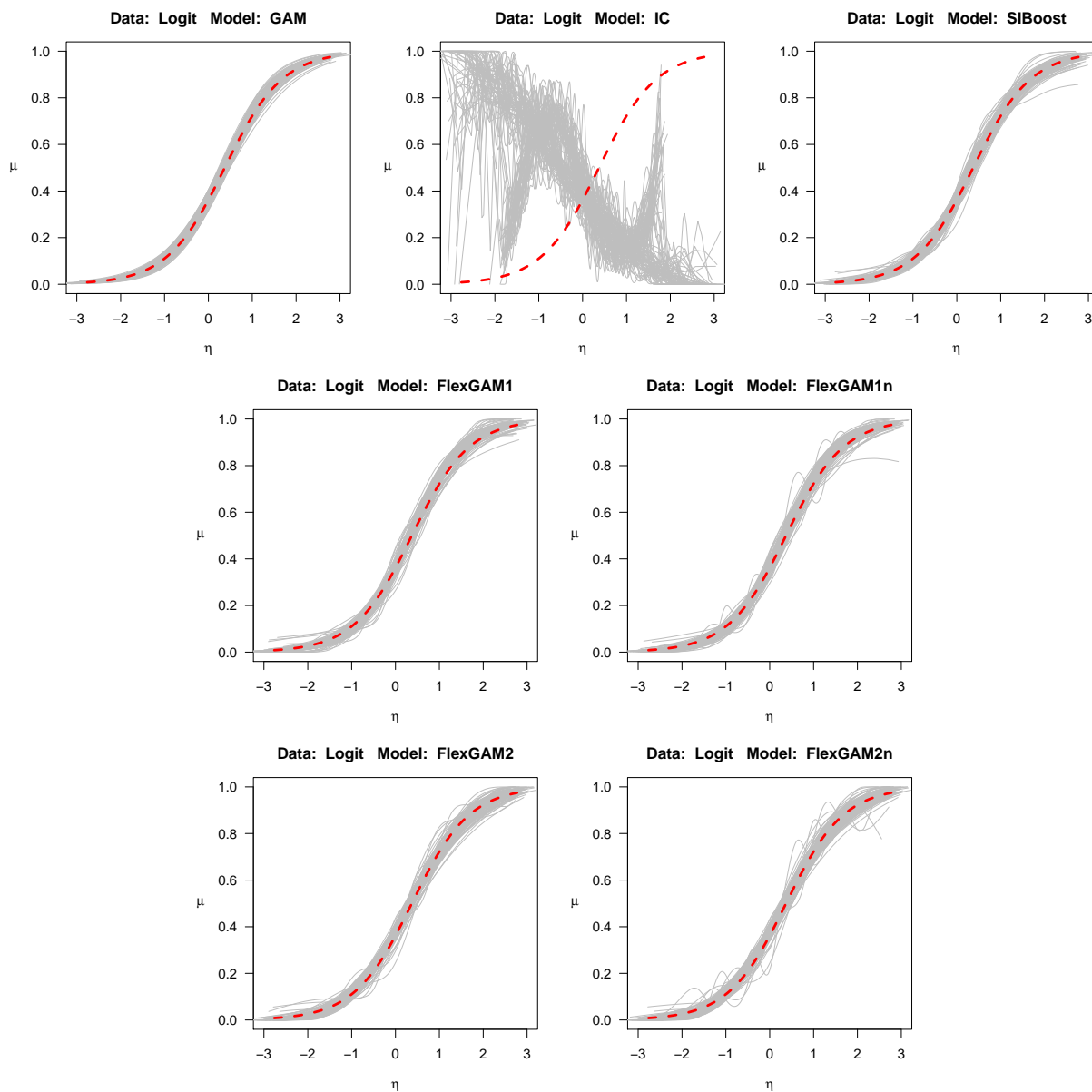


Figure B.24: Estimated response functions for *Logit* data and of the models with smooth predictor

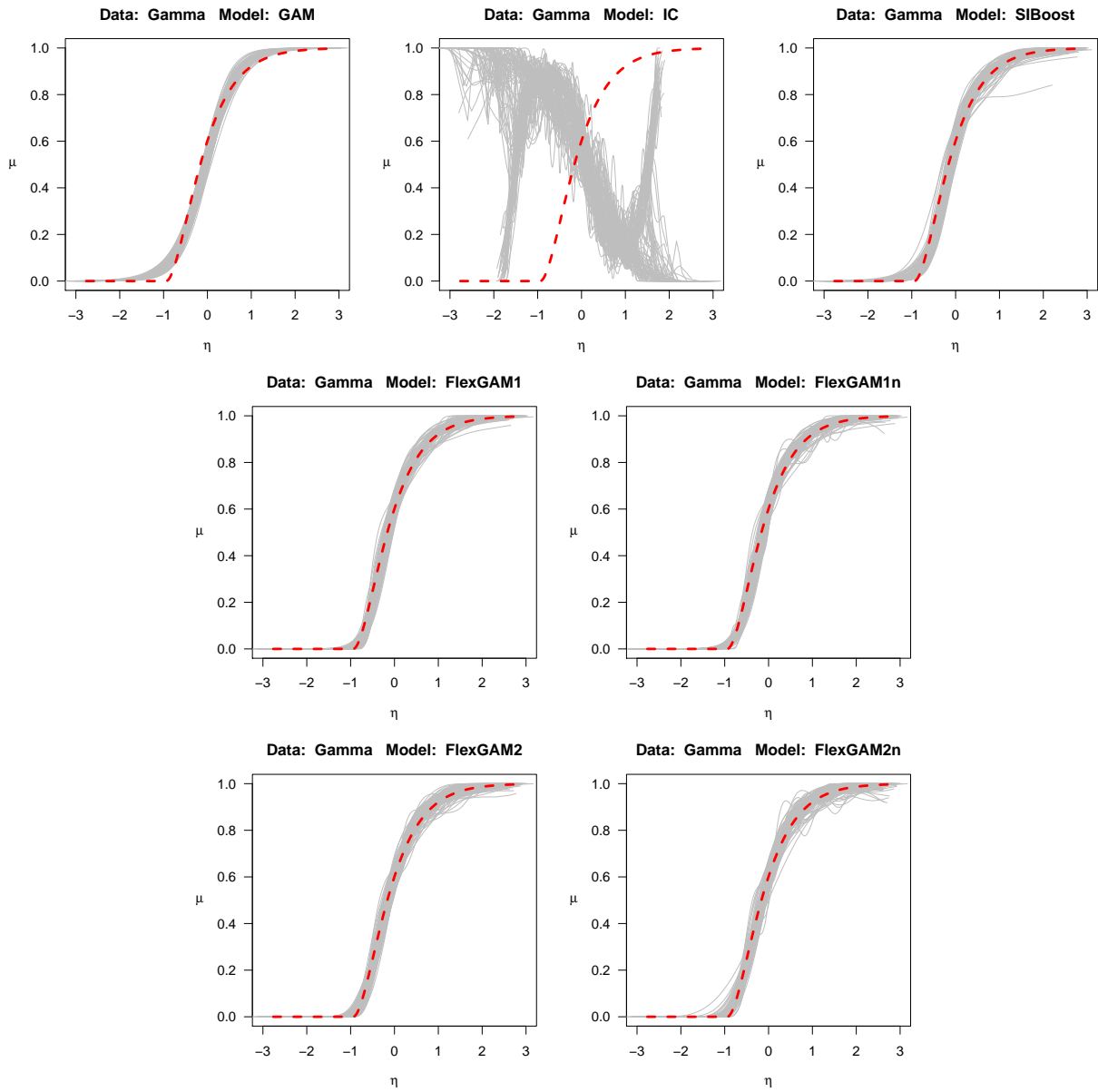


Figure B.25: Estimated response functions for Γ data and of the models with smooth predictor

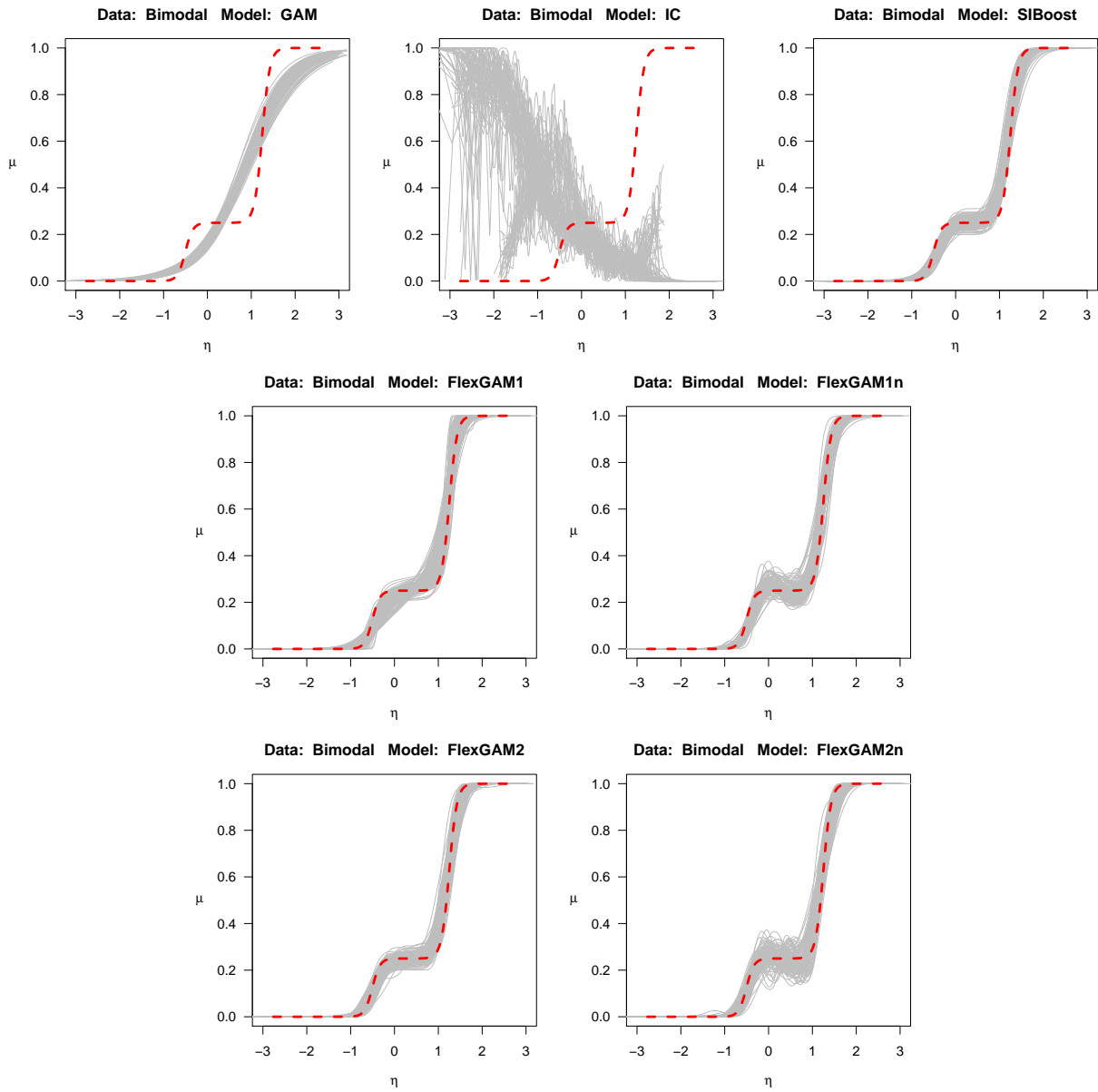


Figure B.26: Estimated response functions for *Bimodal* data and of the models with smooth predictor

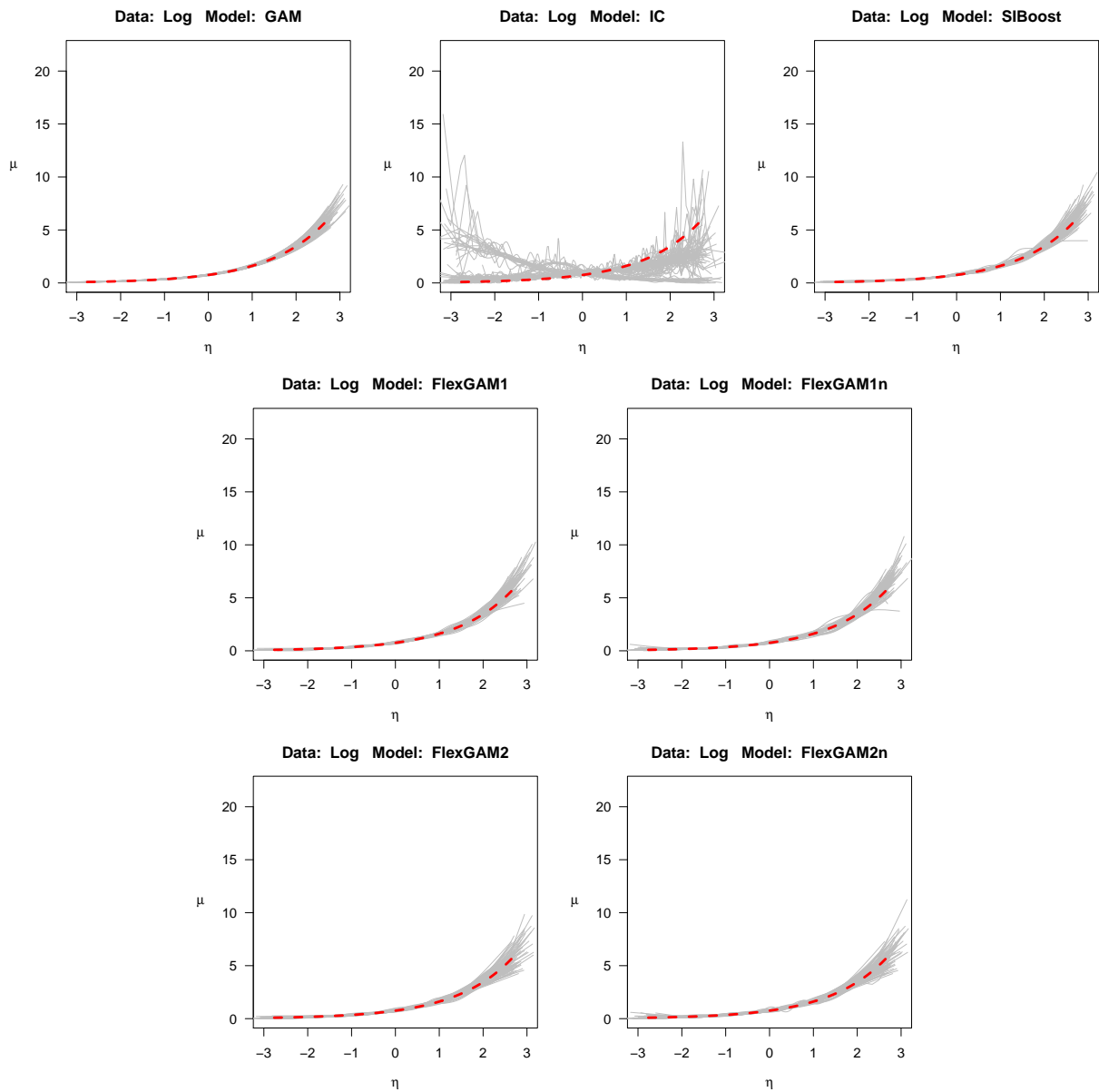


Figure B.27: Estimated response functions for *Log* data and of the models with smooth predictor

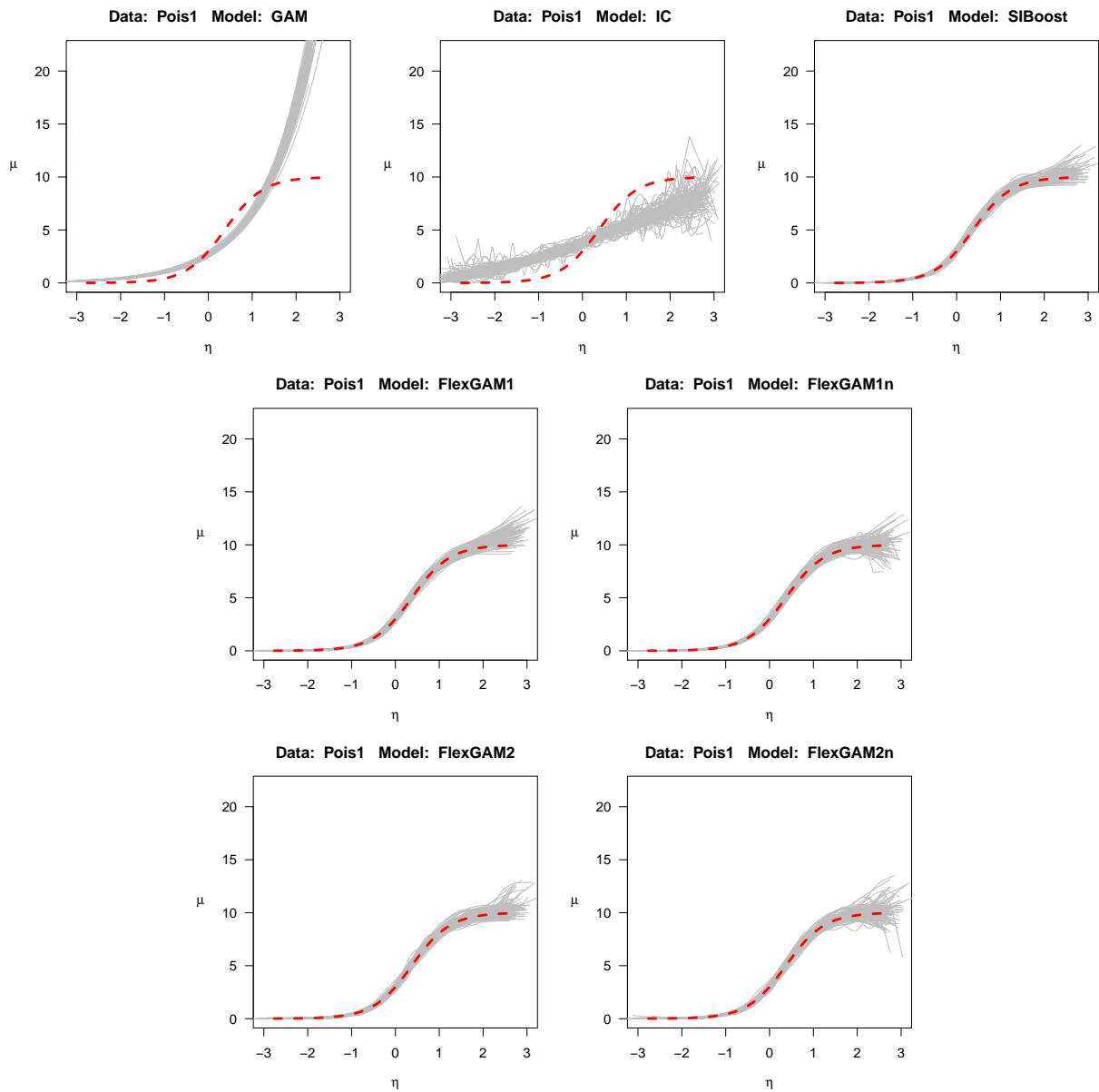


Figure B.28: Estimated response functions for *Pois1* data and of the models with smooth predictor

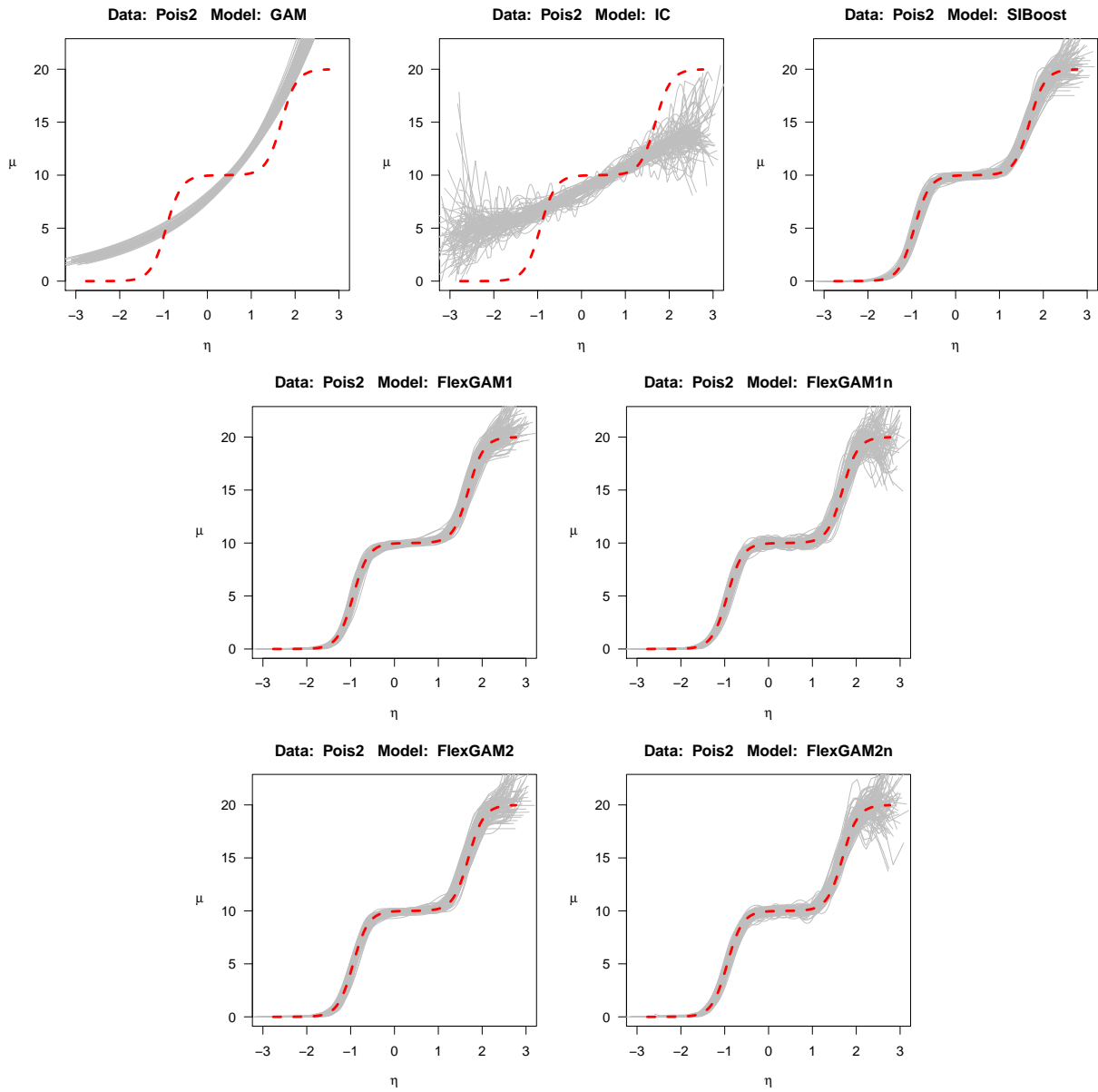


Figure B.29: Estimated response functions for *Pois2* data and of the models with smooth predictor

B.2.3 Estimated Covariate Effects

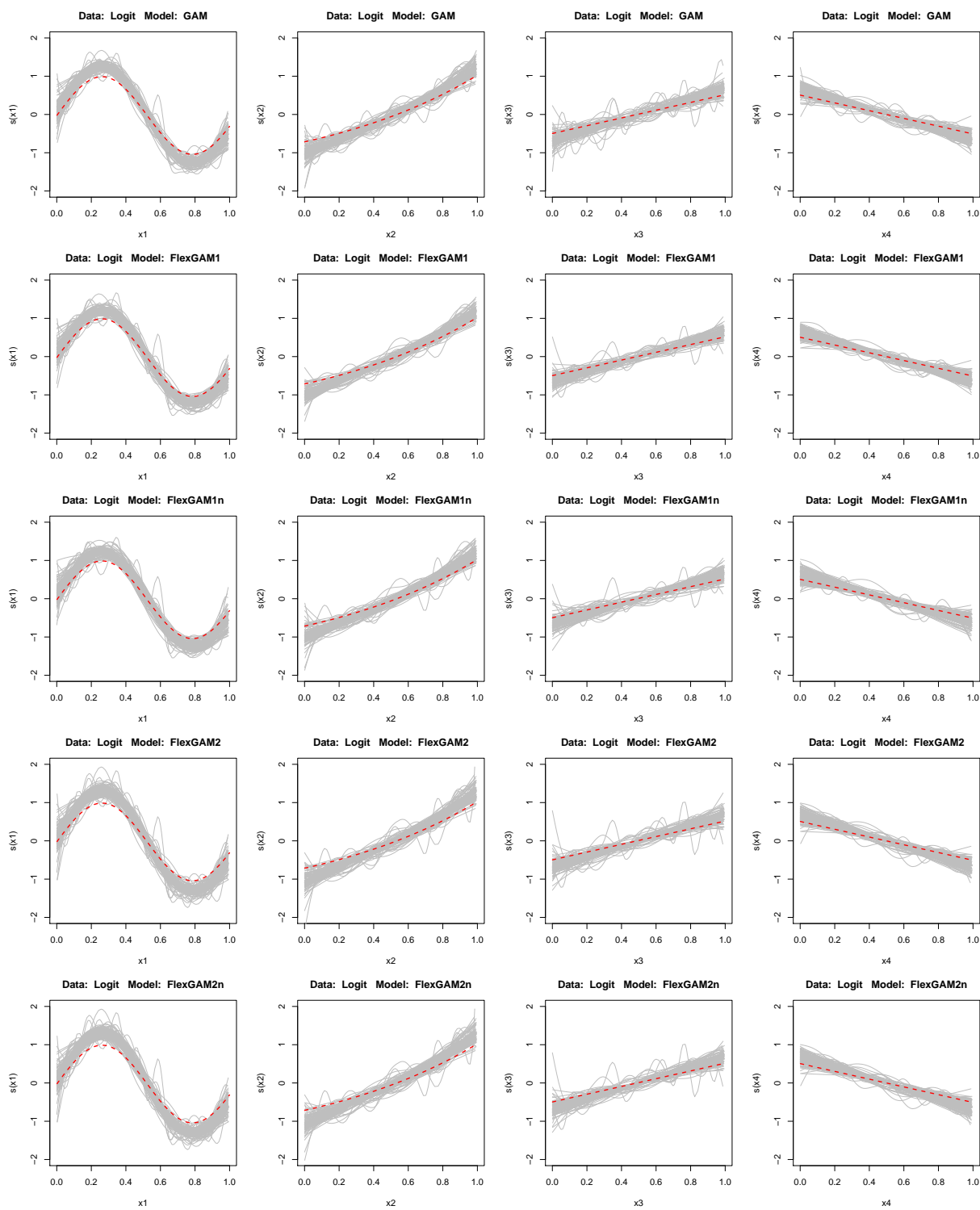


Figure B.30: Estimated scaled covariate effects for *Logit* data and of the models with smooth predictor

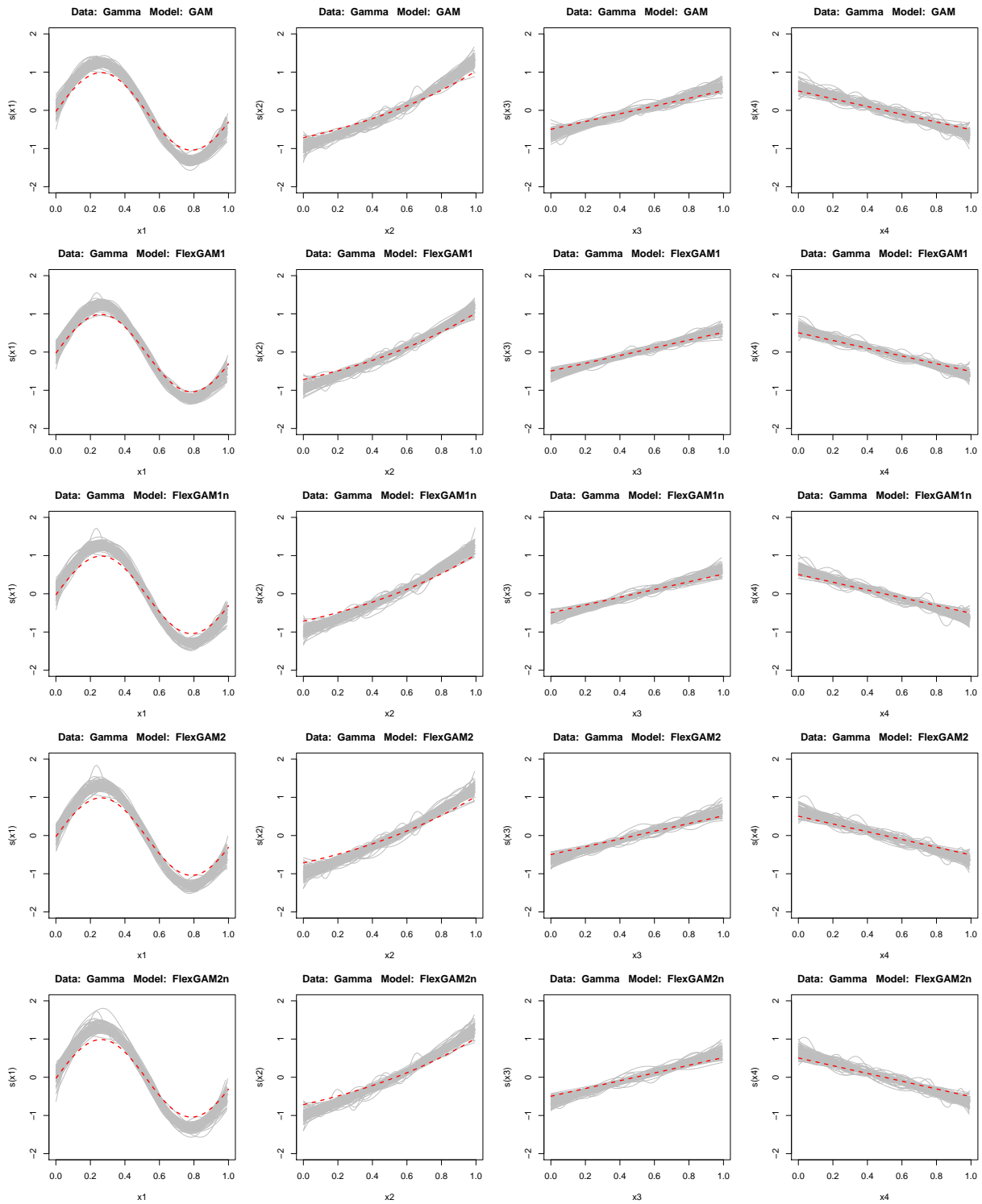


Figure B.31: Estimated scaled covariate effects for *Gamma* data and of the models with smooth predictor

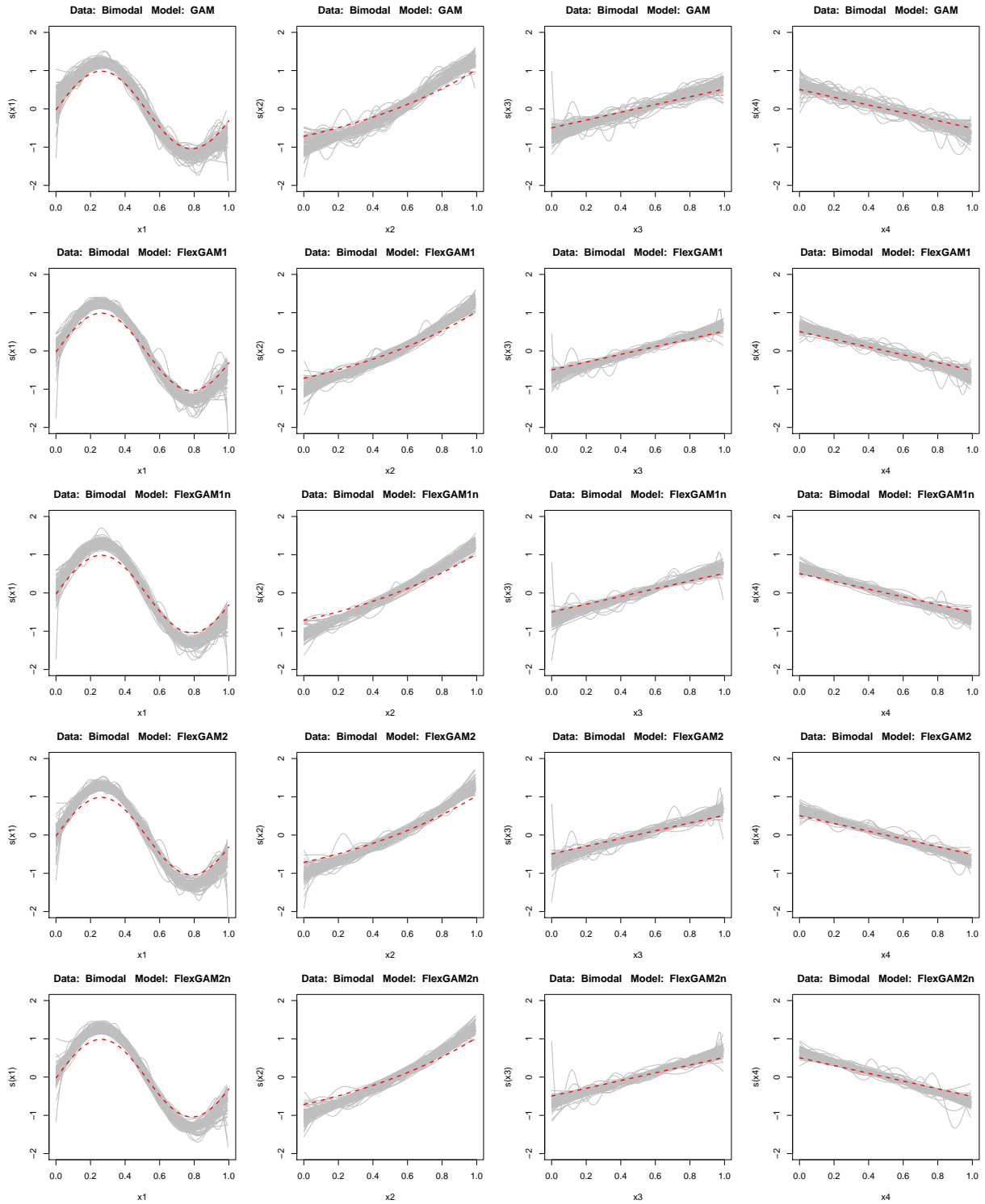


Figure B.32: Estimated scaled covariate effects for *Bimodal* data and of the models with smooth predictor

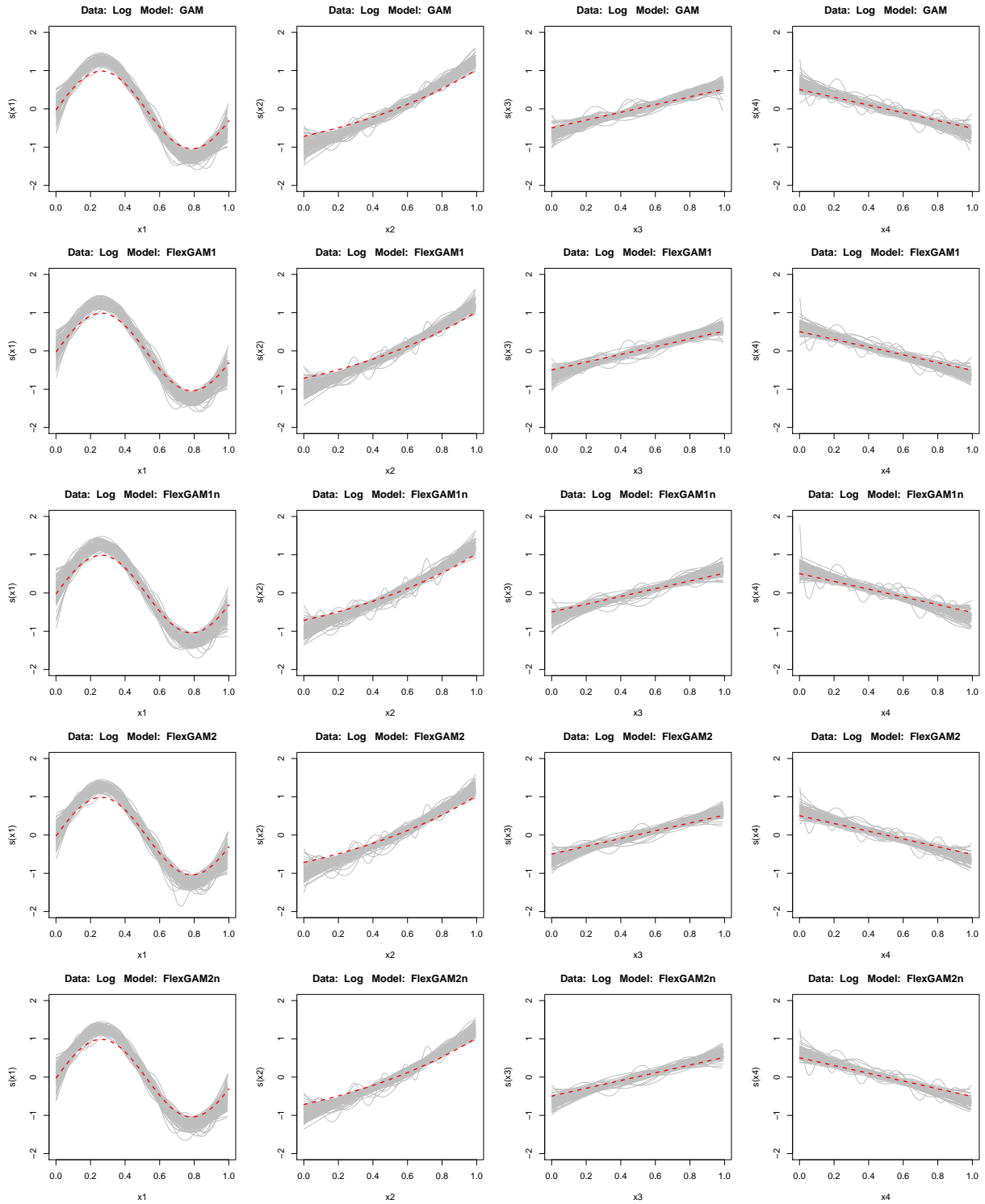


Figure B.33: Estimated scaled covariate effects for *Log* data and of the models with smooth predictor

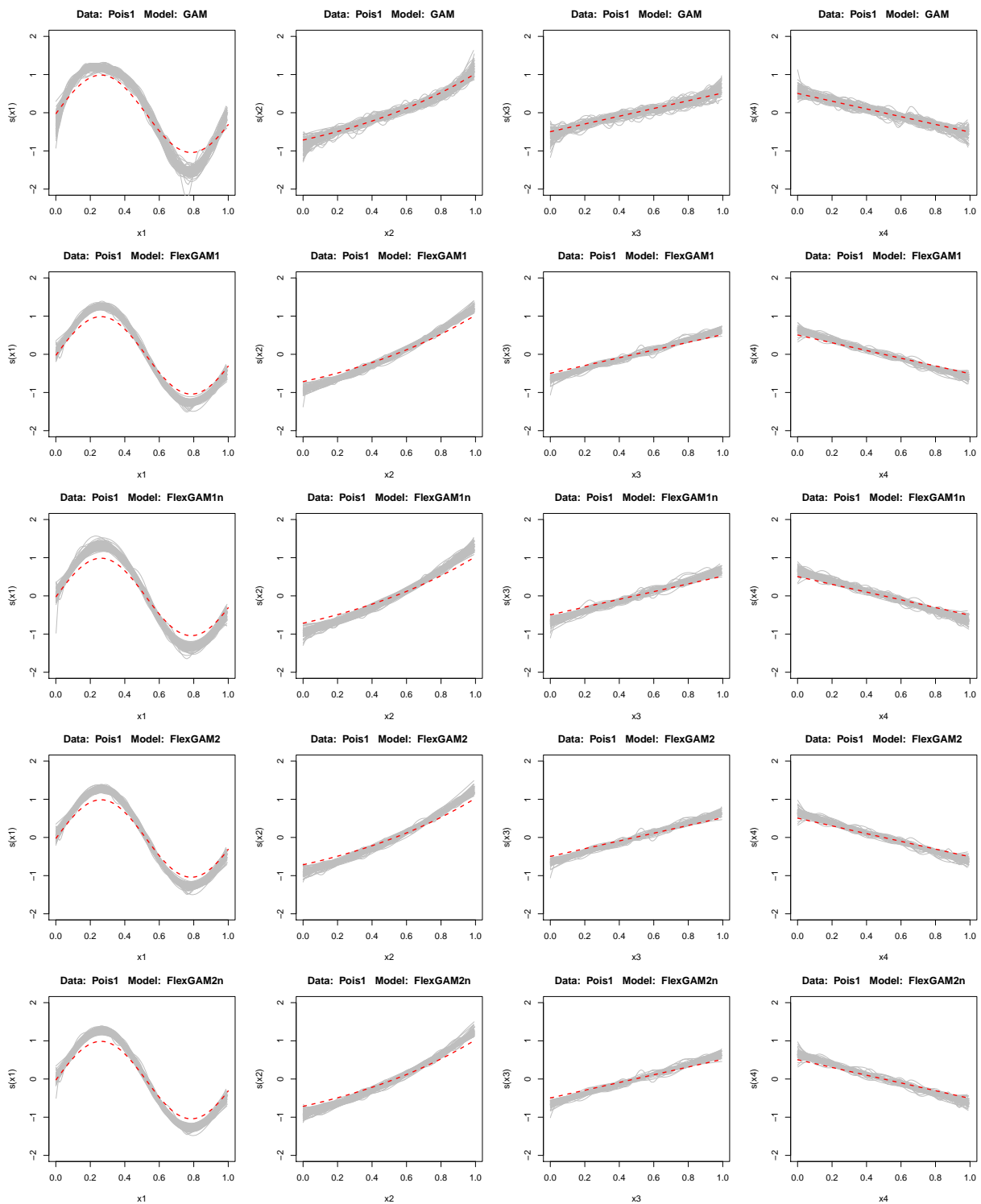


Figure B.34: Estimated scaled covariate effects for *Pois1* data and models with smooth predictor

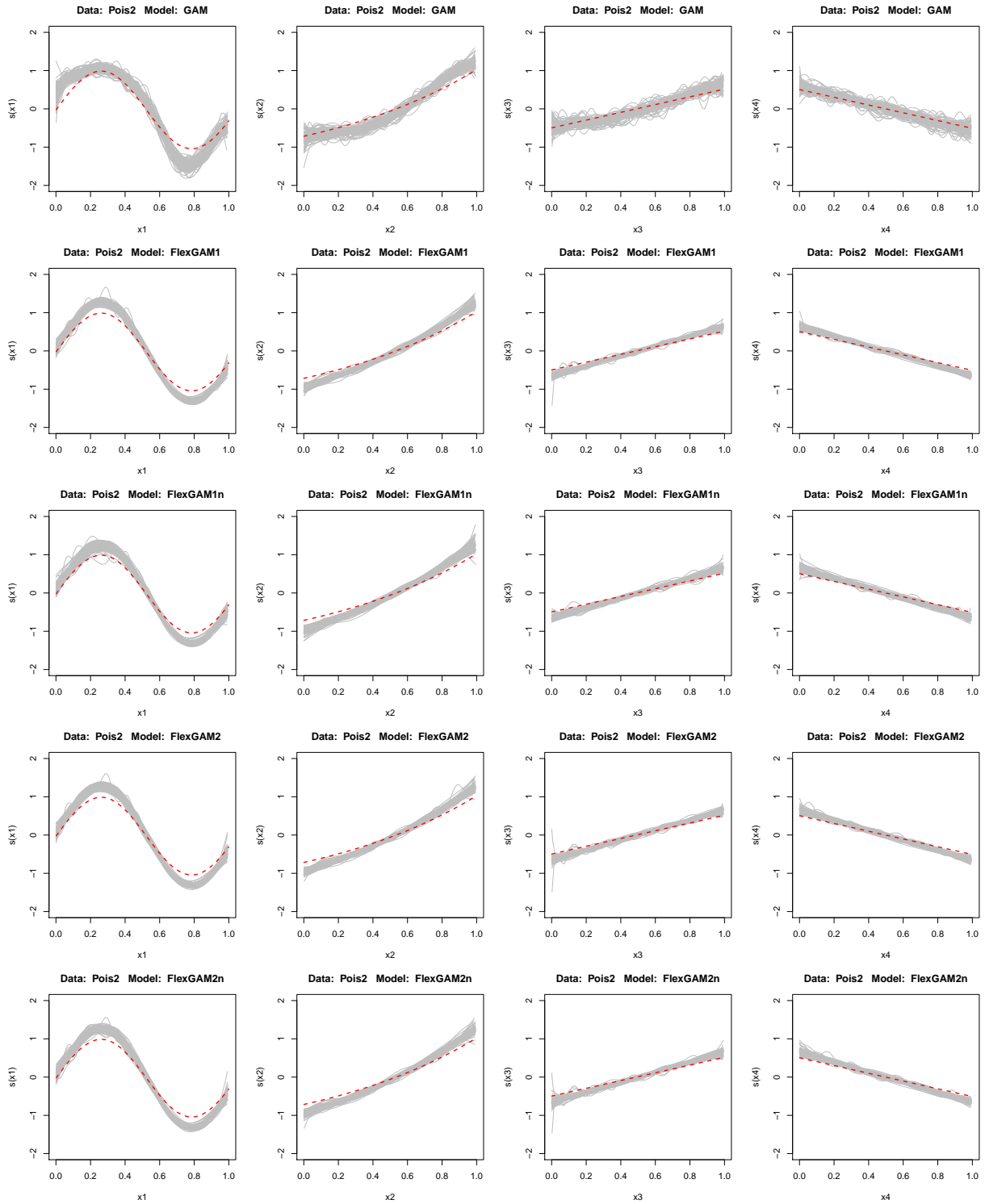


Figure B.35: Estimated scaled covariate effects for *Pois2* data and of the models with smooth predictor

B.2.4 ROC-Curves

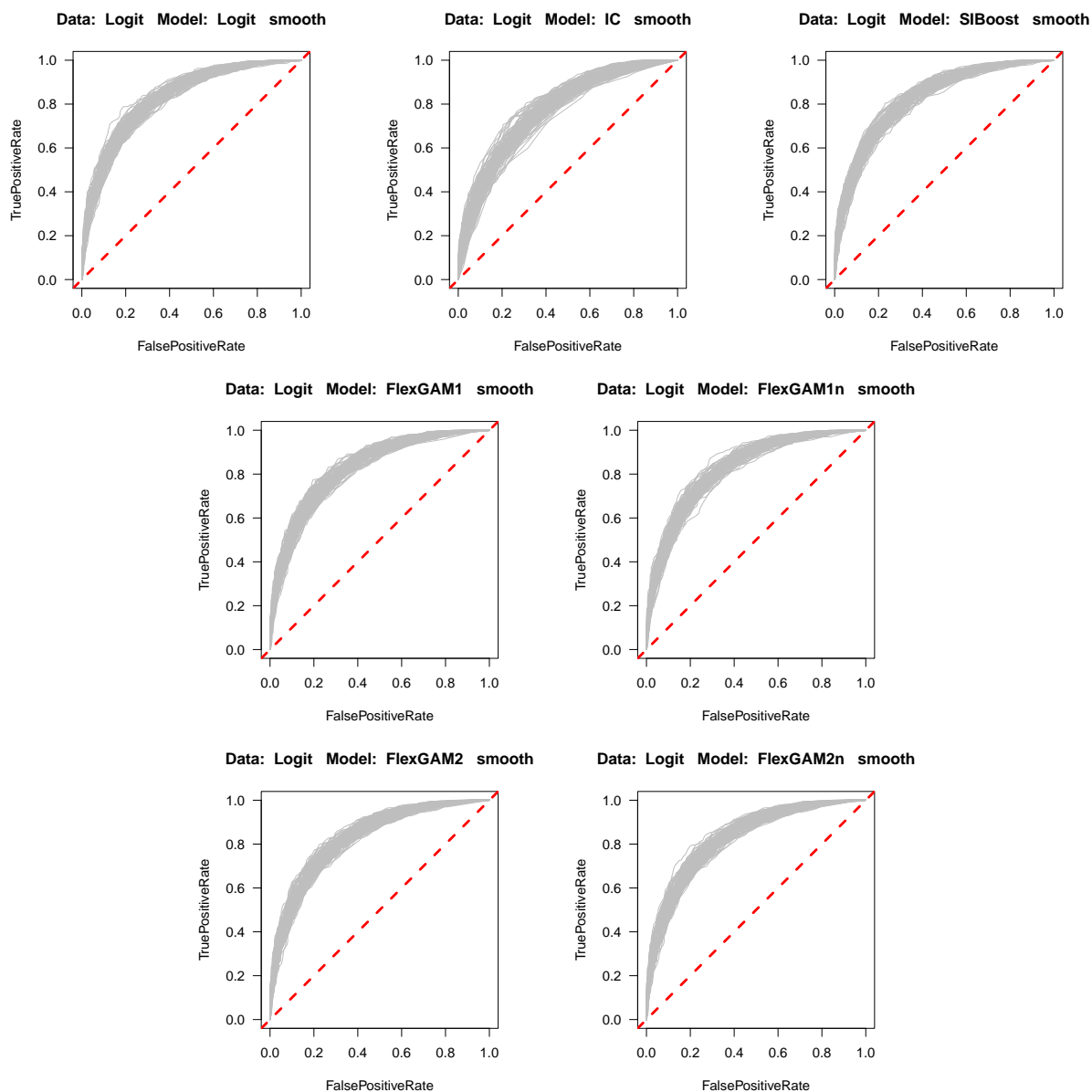


Figure B.36: Estimated ROC curves for *Logit* data and of the models with smooth predictor

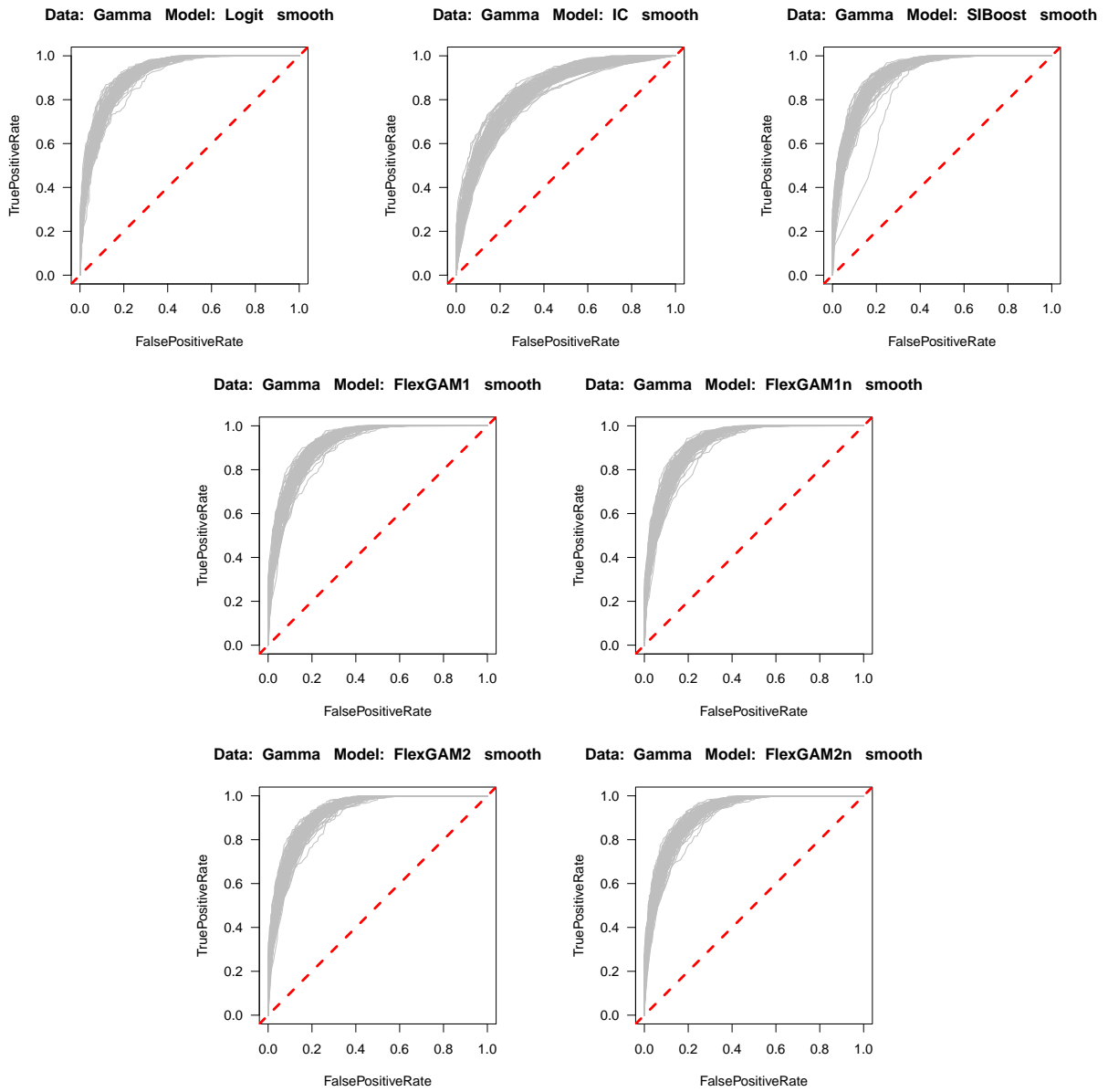


Figure B.37: Estimated ROC curves for *Gamma* data and of the models with smooth predictor

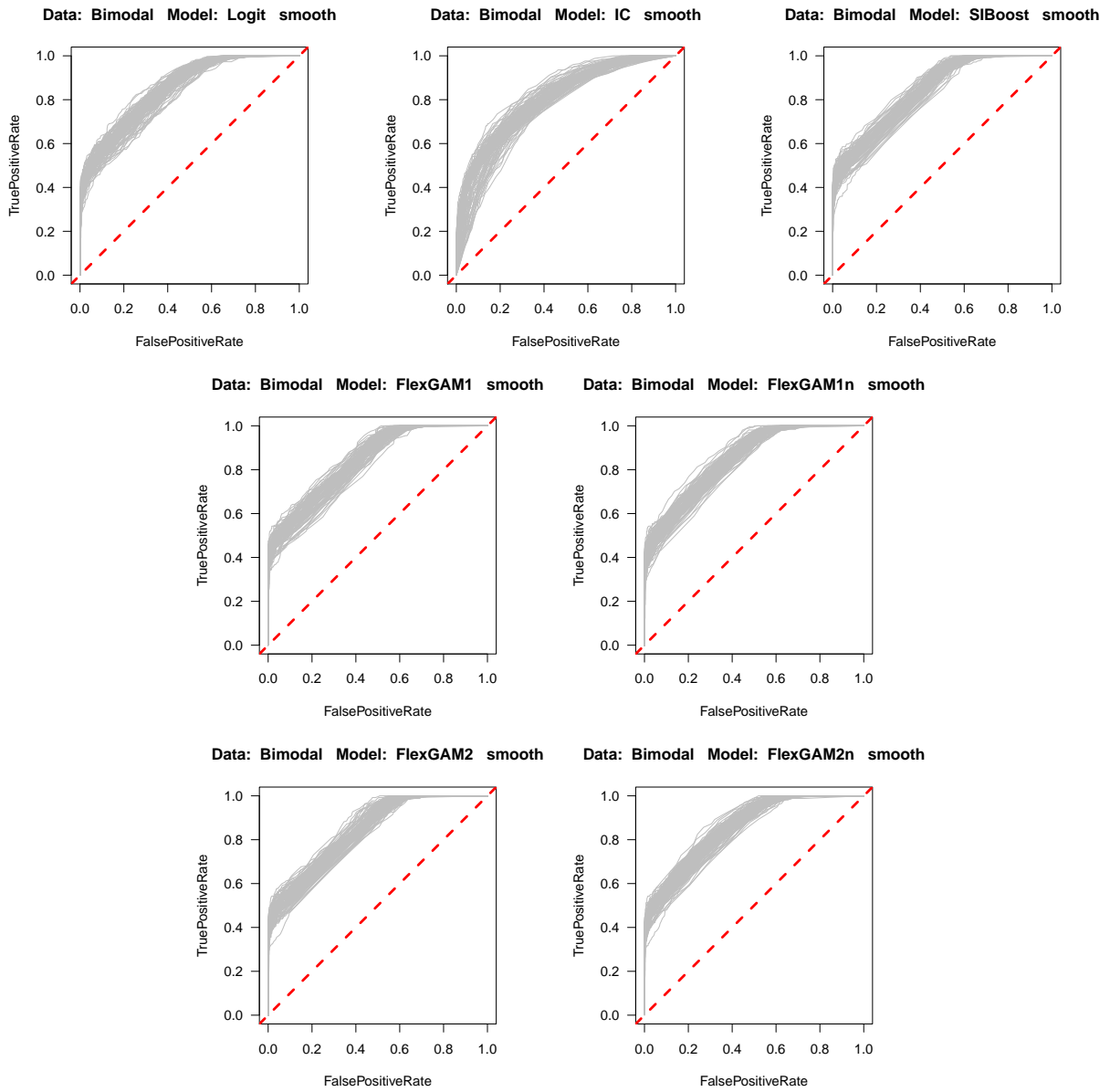


Figure B.38: Estimated ROC curves for *Bimodal* data and of the models with smooth predictor