

Atmungssystem (Systema respiratorium)

Allgemeines und vergleichende Betrachtung

- Nasenlöcher (Nares)
- Nasenhöhlen (Cava nasi)
- Nasenrachen (Pars nasalis pharyngis)
- Kehlkopf (Larynx)
- Luftröhre (Trachea)
- Lunge (Pulmo)

Funktionen

- Gasaustausch (Alveolen)
- Zustromregulation
- Reinigung der Luft
- Befeuchtung der Luft
- Erwärmung der Luft
- Geruchsorgan
- Stimmerzeugung (Kehlkopf)
- Ansatzrohr des Stimmapparates (Mundhöhle)

Nasenatmung/Mundatmung

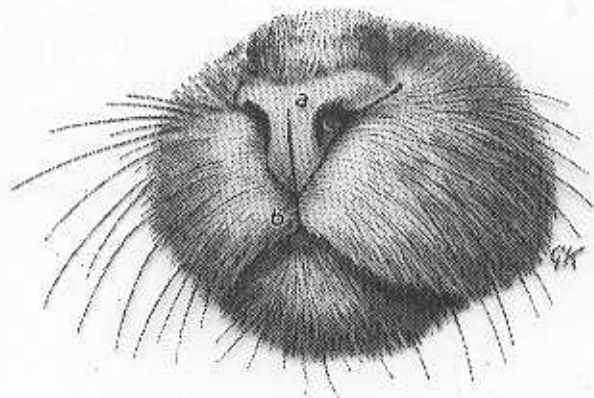


Abb. 269 (Katze)

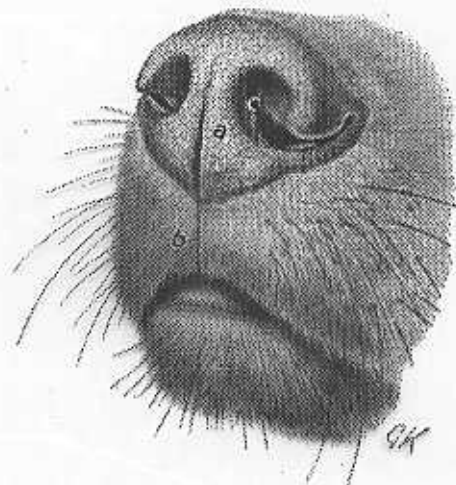


Abb. 270 (Hund)

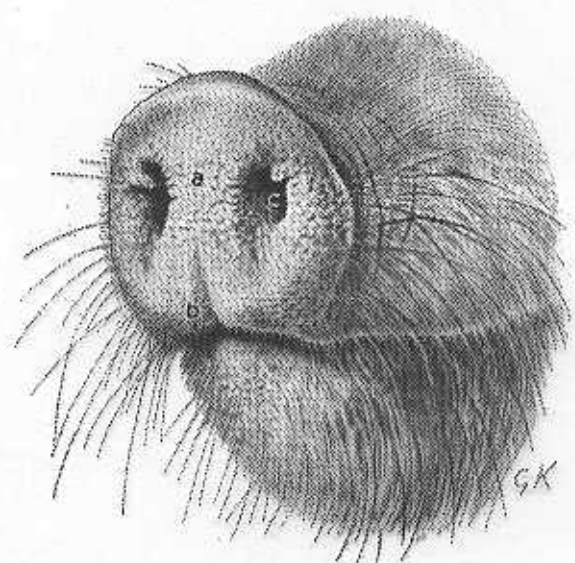


Abb. 271 (Schwein)

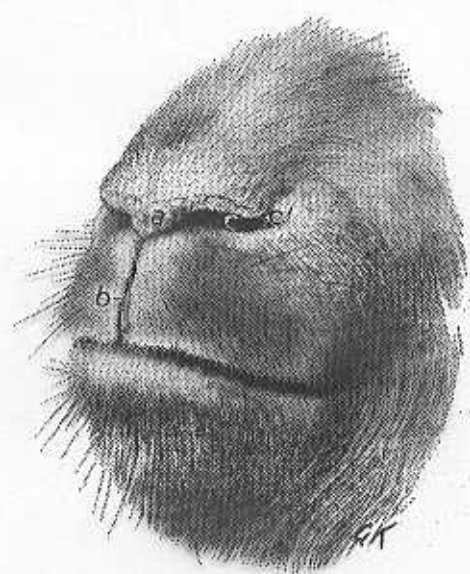


Abb. 272 (Ziege)

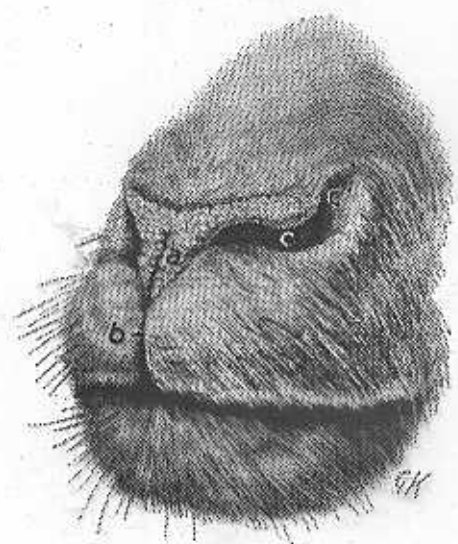


Abb. 273 (Schaf)

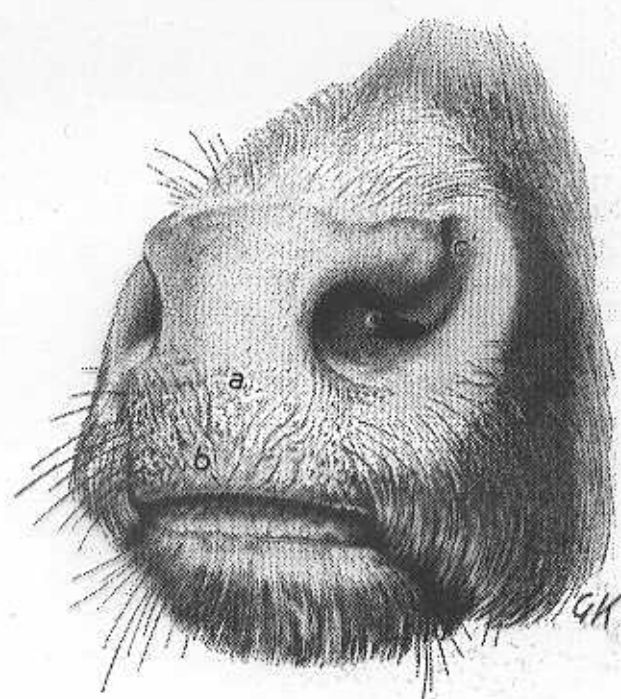


Abb. 274 (Rind)

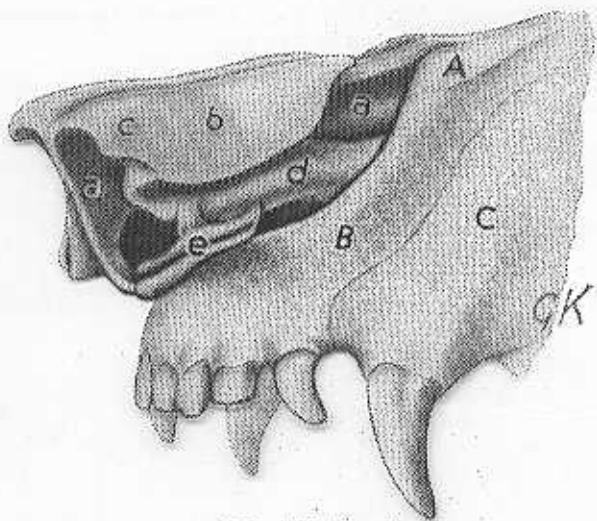


Abb. 277 (Hund)

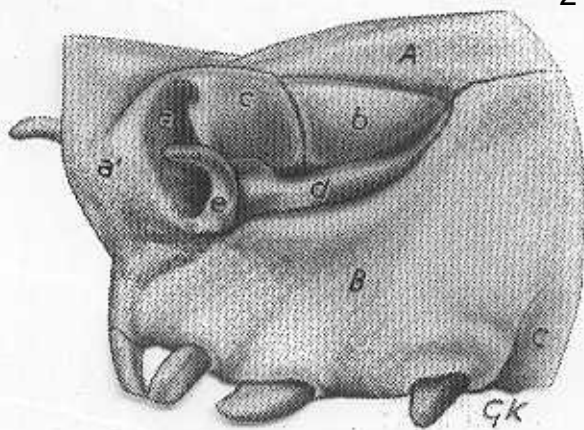


Abb. 278 (Schwein)

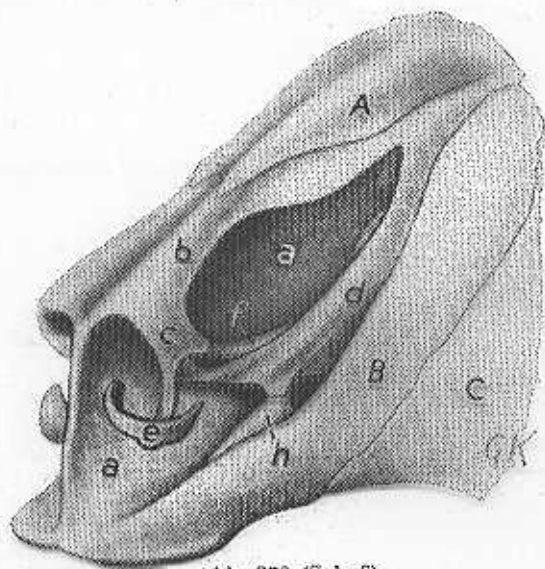


Abb. 279 (Schaf)

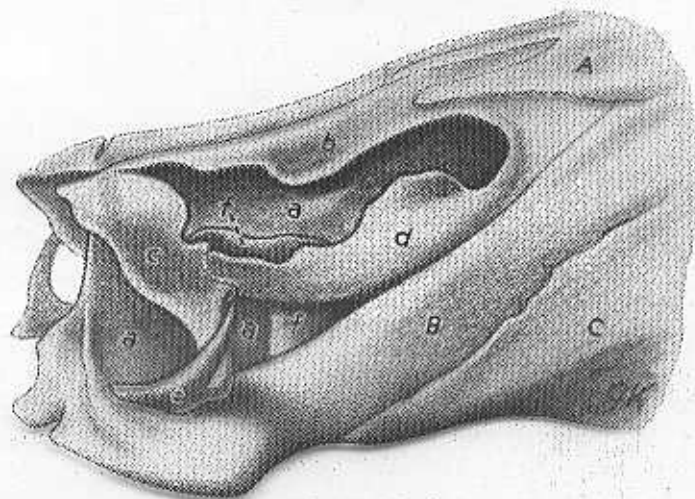


Abb. 280 (Rind)

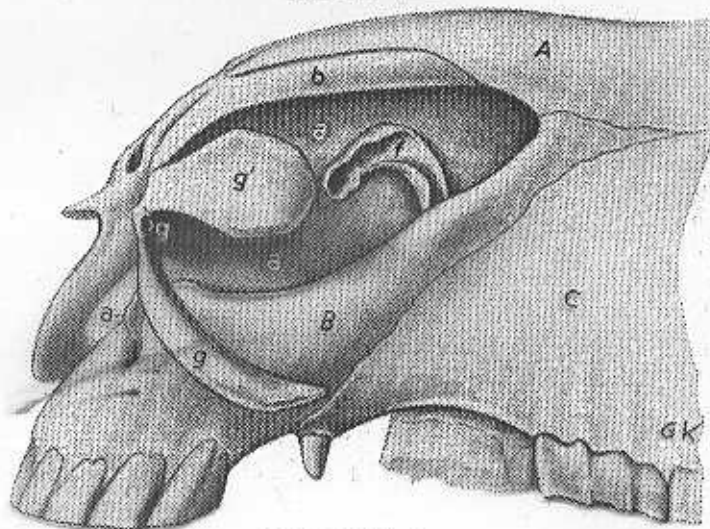
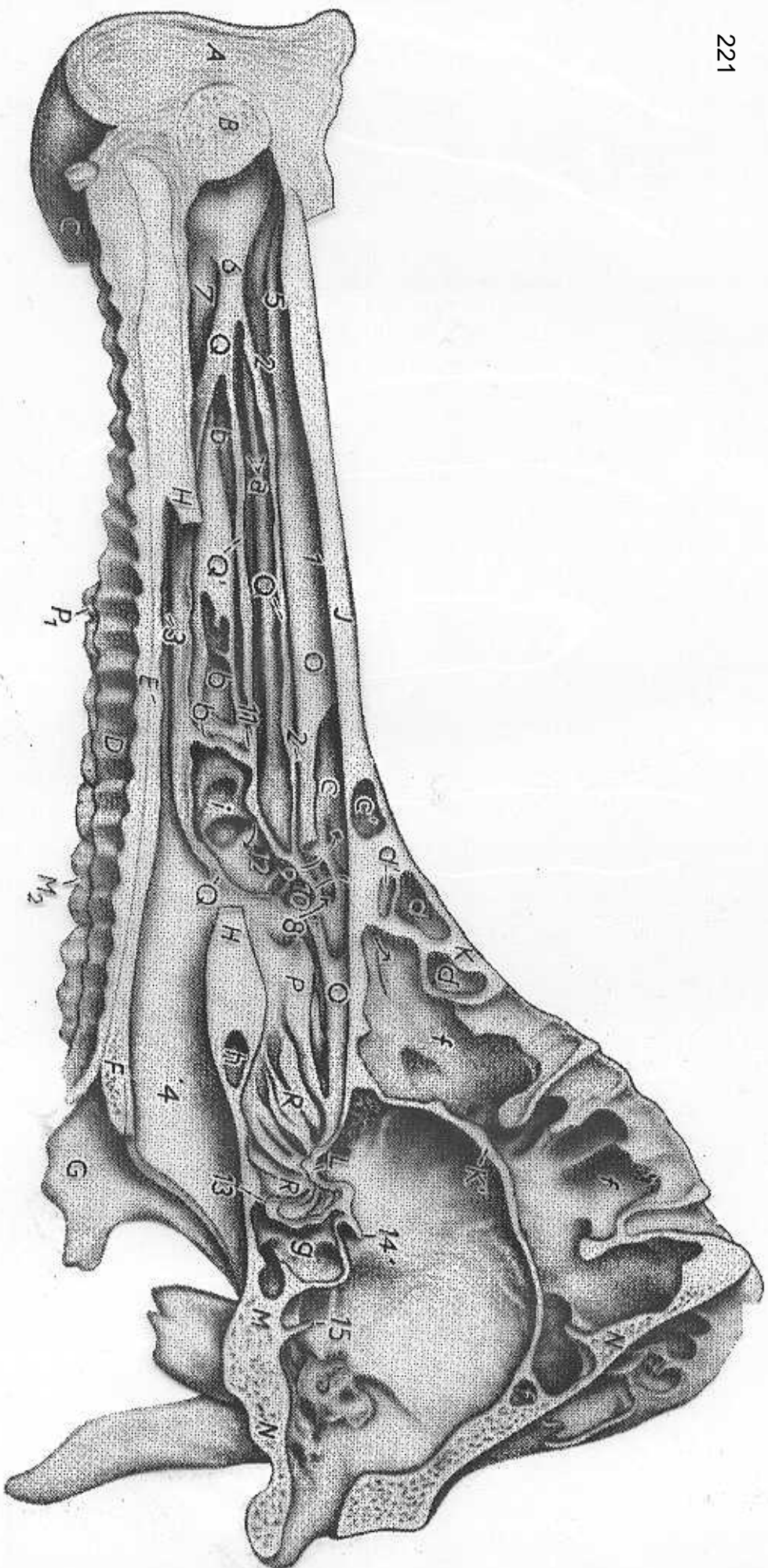
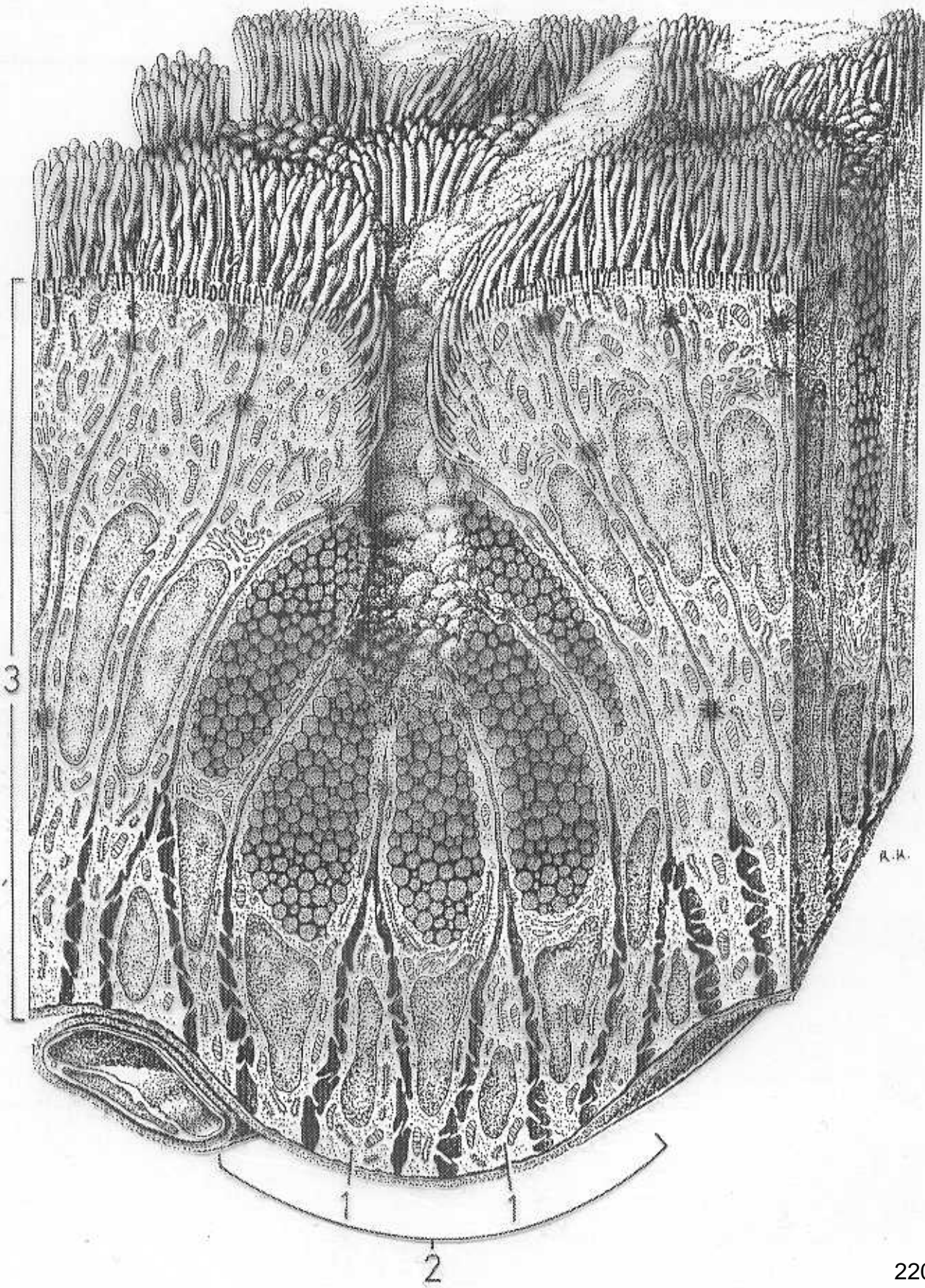
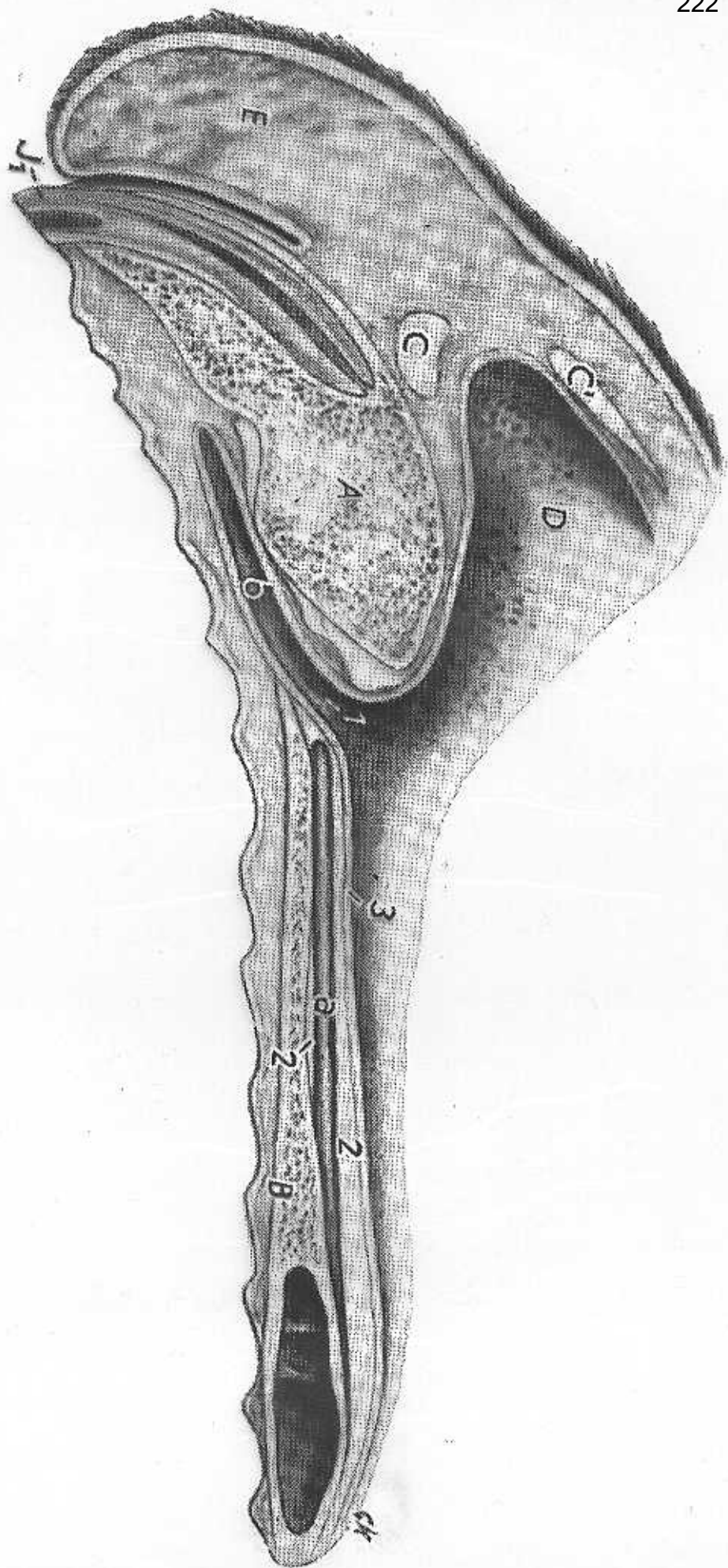


Abb. 281 (Pferd)







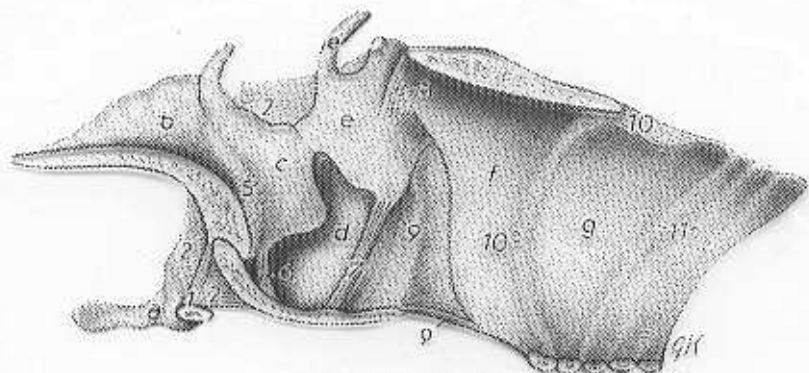


Abb. 330 (Hund)

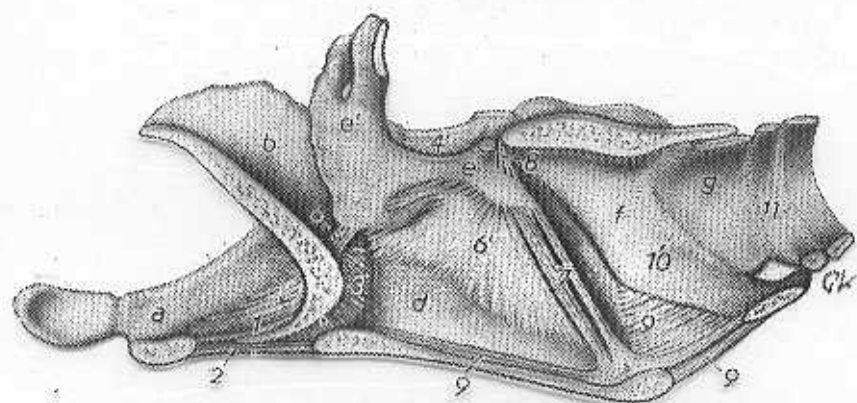


Abb. 331 (Schwein)

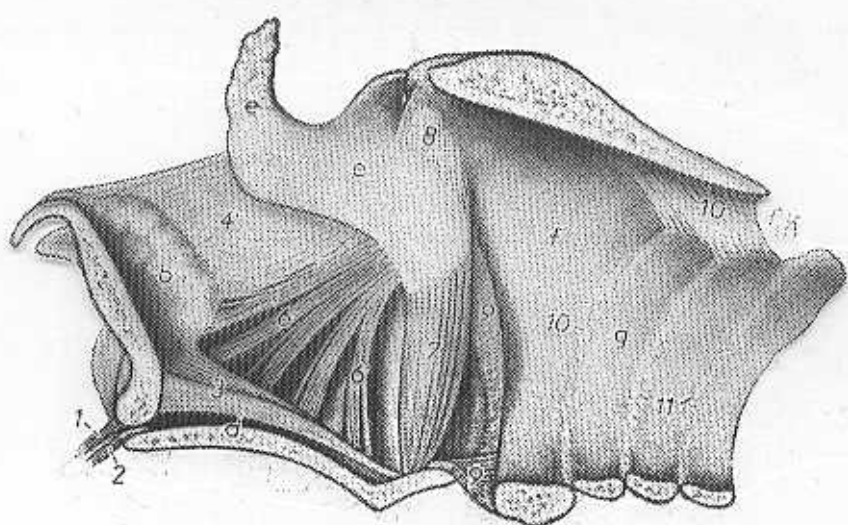


Abb. 332 (Rind)

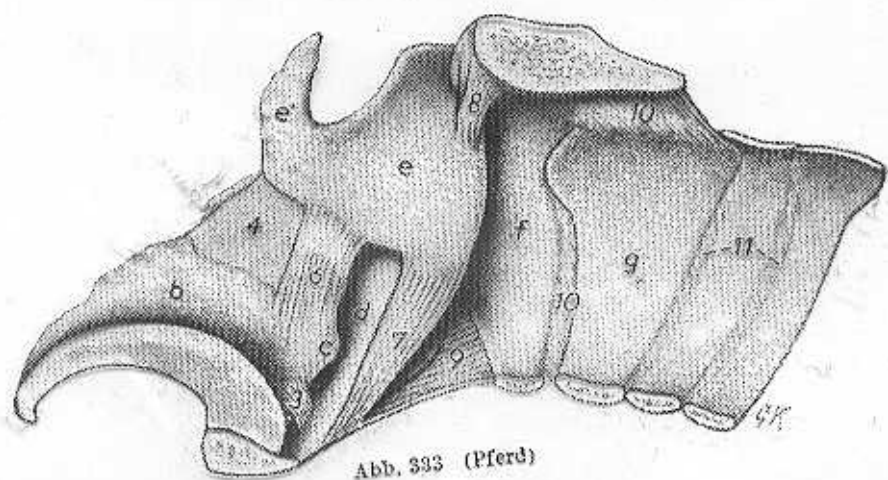


Abb. 333 (Pferd)

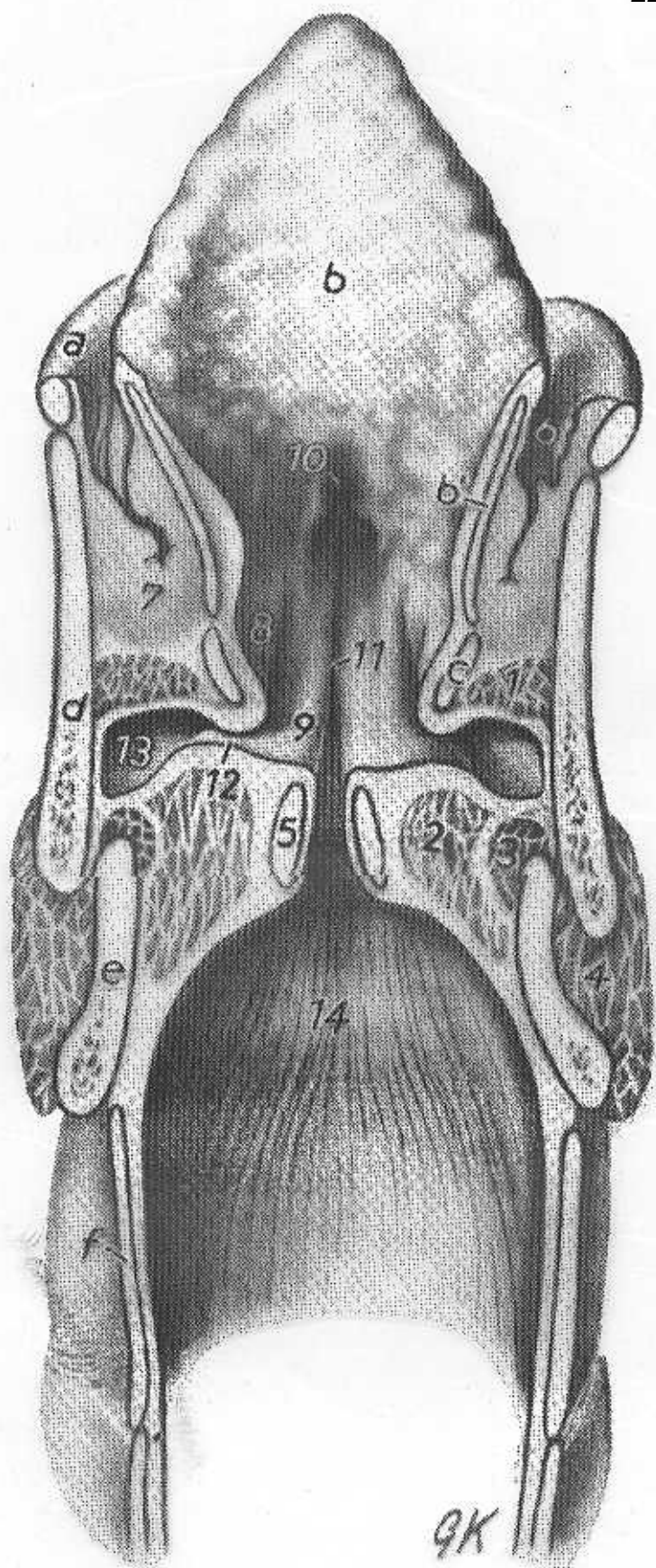


Abb. 340. Kehlkopf des Pferdes.
Horizontalsechnitt.



Abb. 341 (Katze)

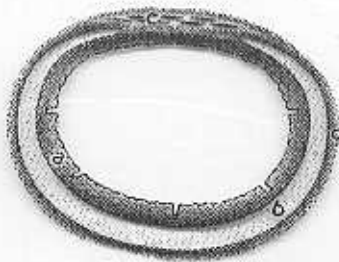


Abb. 342 (Hund)

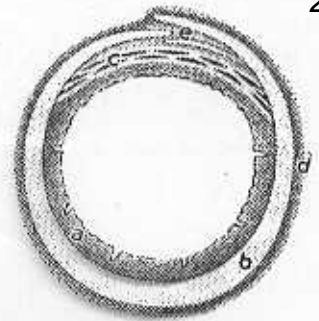


Abb. 343 (Schwein)

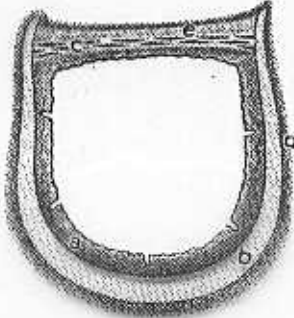


Abb. 344 (Ziege)

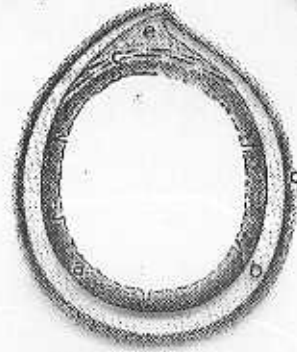


Abb. 345 (Schaf)

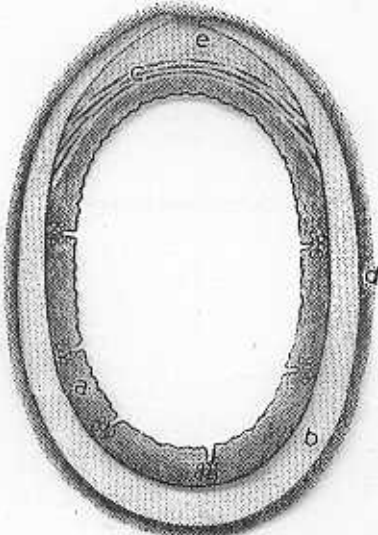


Abb. 346 (Rind)

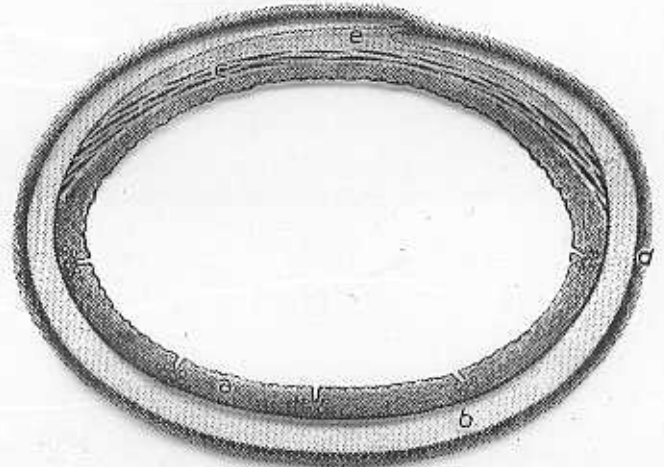


Abb. 348 (Pferd)

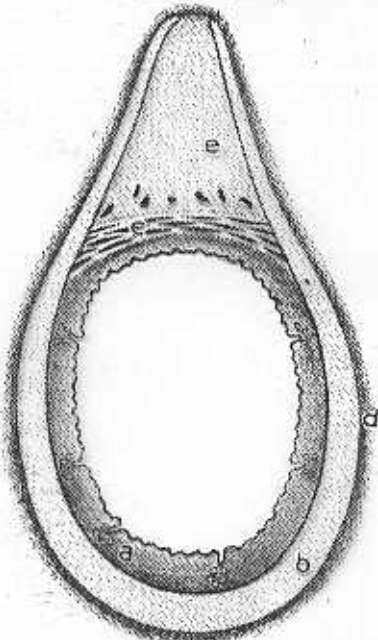


Abb. 347 (Rind)

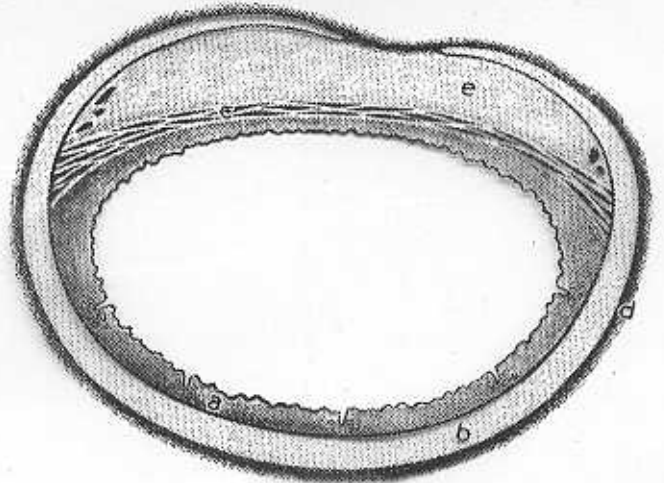


Abb. 349 (Pferd)