

GAUSS

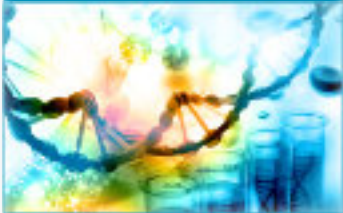
Georg-August University School of Science

GAUSS Spokesperson / GAUSS Board / GAUSS Office

Deans of Faculties / Faculty Boards / Dean's Offices

GGNB Spokesperson & Board
GGNB & IMPRS Offices

Biology & Psychology



Faculty program

» *Biology* [68]

Thematical programs

» *Behavior & Cognition* [32]
» *Biodiversity & Ecology* [18]

Associated program

» *Applied Statistics and Empirical Methods (ASEM)* [2]

Chemistry



Faculty program

» *Chemistry* [121]

Thematical programs

» *Catalysis for Sustainable Synthesis (CaSuS)* [13]

Geoscience & Geography



Faculty programs

» *Geoscience* [32]
» *Geography* [10]

Mathematics & Computer Science



Faculty programs

» *Mathematical Sciences (SMS)* [56]
» *Computer Science (PCS)* [68]
» *Data Science (PDS)* [39]

Thematical programs

» *Environmental Informatics (PEI)* [5]

Physics



Faculty program

» *Physics* [139]

IMPRS

» *Solar System Science*

GGNB

(Neuro, Biophysics, Molbio)



IMPRS

» *Genome Science* [64]
» *Molecular Biology* [54]
» *Neurosciences* [56]
» *Physics of Biological and Complex Systems* [90]

Thematical programs

» *10 doctoral programs (life sciences)* [214] *

Research Training Group

» *iRTG 2172 PRoTECT* [2]

Göttingen Campus Partners: UMG, MPI-DS, MPI-NAT, MPS, DPZ, DLR, Fraunhofer ITMP

[#] number of students enrolled in the program as of 12 May 2026 [1084]

Access the webpages by moving the cursor over the linked headings or programs

* GGNB Thematical programs:

» *Biomolecules: Structure - Function - Dynamics* [27]
» *Cardiovascular Science* [20]
» *Cells and Organisms: From Genes to Evolution* [25]
» *Cellular and Molecular Physiology of the Brain* [1]

» *Genes in Development, Disease and Evolution* [25]
» *Microbiology and Biochemistry* [5]
» *Molecular Medicine* [74]

» *Sensory and Motor Neuroscience* [18]

» *Systems Neuroscience* [11]

» *Theoretical and Computational Neuroscience* [8]

In addition to their specific doctoral program many doctoral students are also members of a **DFG Research Training Group** (click here for the full list of RTGs).