

# Semi-dry grasslands are home to many rare animal and plant species

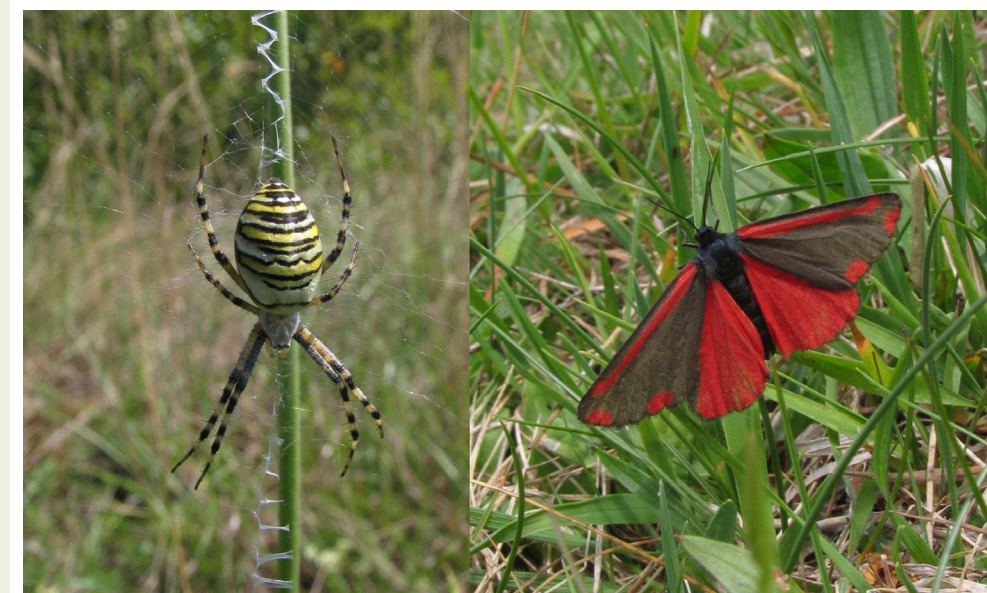


Semi-dry grassland

Semi-dry grasslands are a type of nutrient-poor grassland (see also the Nutrient-poor grassland board) found on shallow soils where no fertiliser is applied. In contrast to "true" dry grasslands, which are natural communities of habitats where trees cannot grow (e.g. on rocky outcrops), semi-dry grasslands would be covered by forest if human management by mowing or grazing ceased. Semi-dry grasslands are the habitat of many rare animal and plant species, and are considered highly threatened in Germany.

## Photos:

- 1** Semi-dry grasslands on calcareous soils are among the most species-rich vegetation types in Central Europe. The major threats to these areas are the application of fertiliser or damage through trampling or heavy machinery. Photo: S. Meyer
- 2** The semi-dry grasslands around Göttingen support rare and protected orchid species such as military orchid (*Orchis militaris*) and fly orchid (*Ophrys insectifera*). Photo: L. Köhler
- 3** Measures to maintain this plant community are also important for the animals they support, such as the wasp spider (*Argiope bruennichi*) and the cinnabar moth (*Tyria jacobaeae*), that need warm and sunny habitats. Photo: U. Hertel



Experimental Botanical Garden

More information

