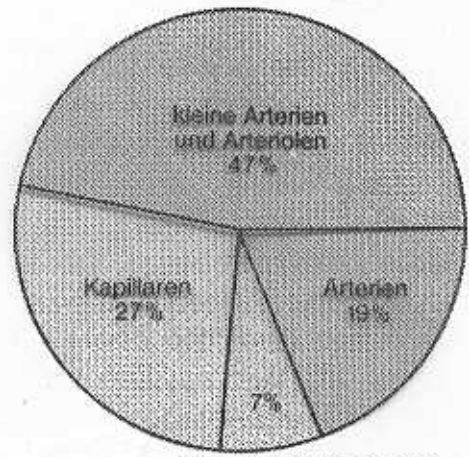
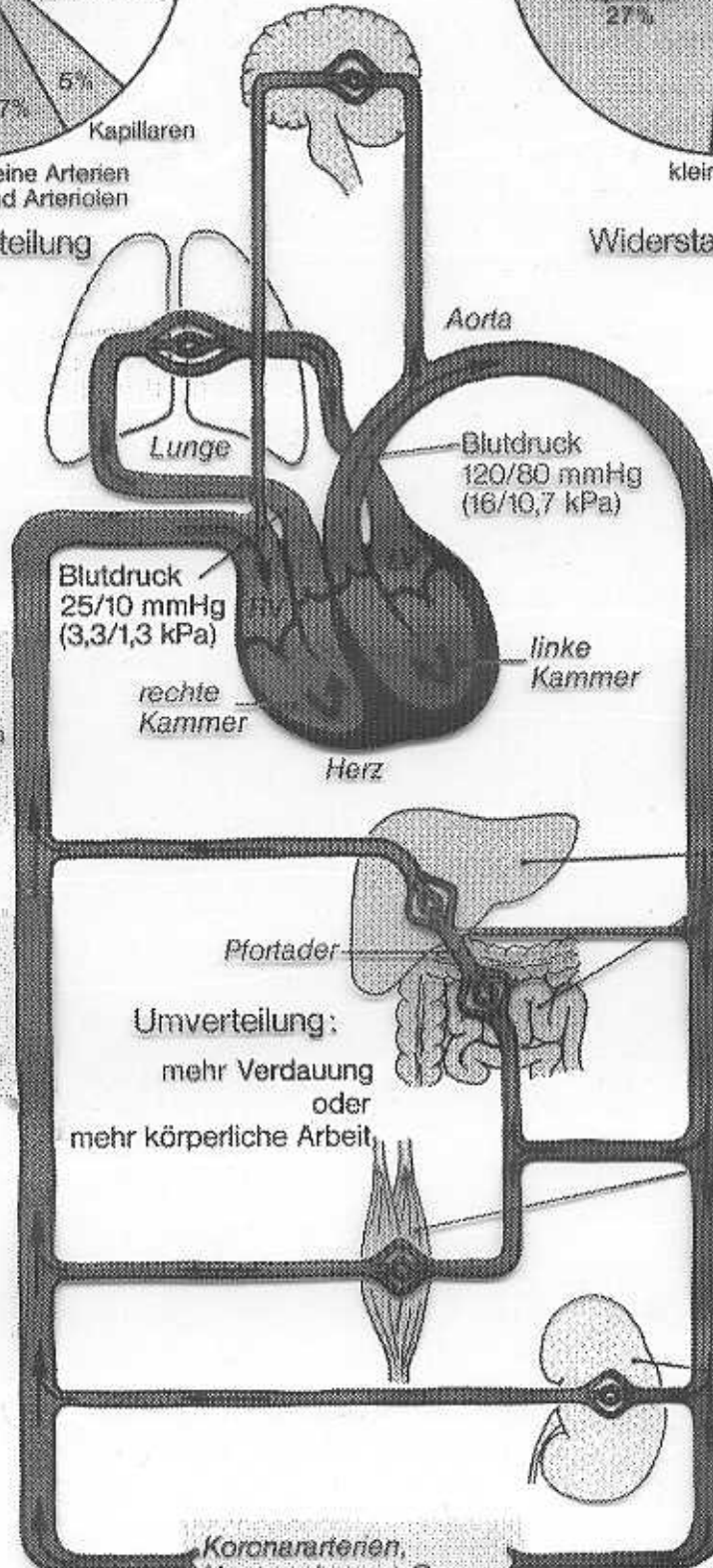


Volumenverteilung



Widerstandsverteilung

Gehirn
 $V = 13$
 $QO_2 = 23$



LV = linker Vorhof

RV = rechter Vorhof

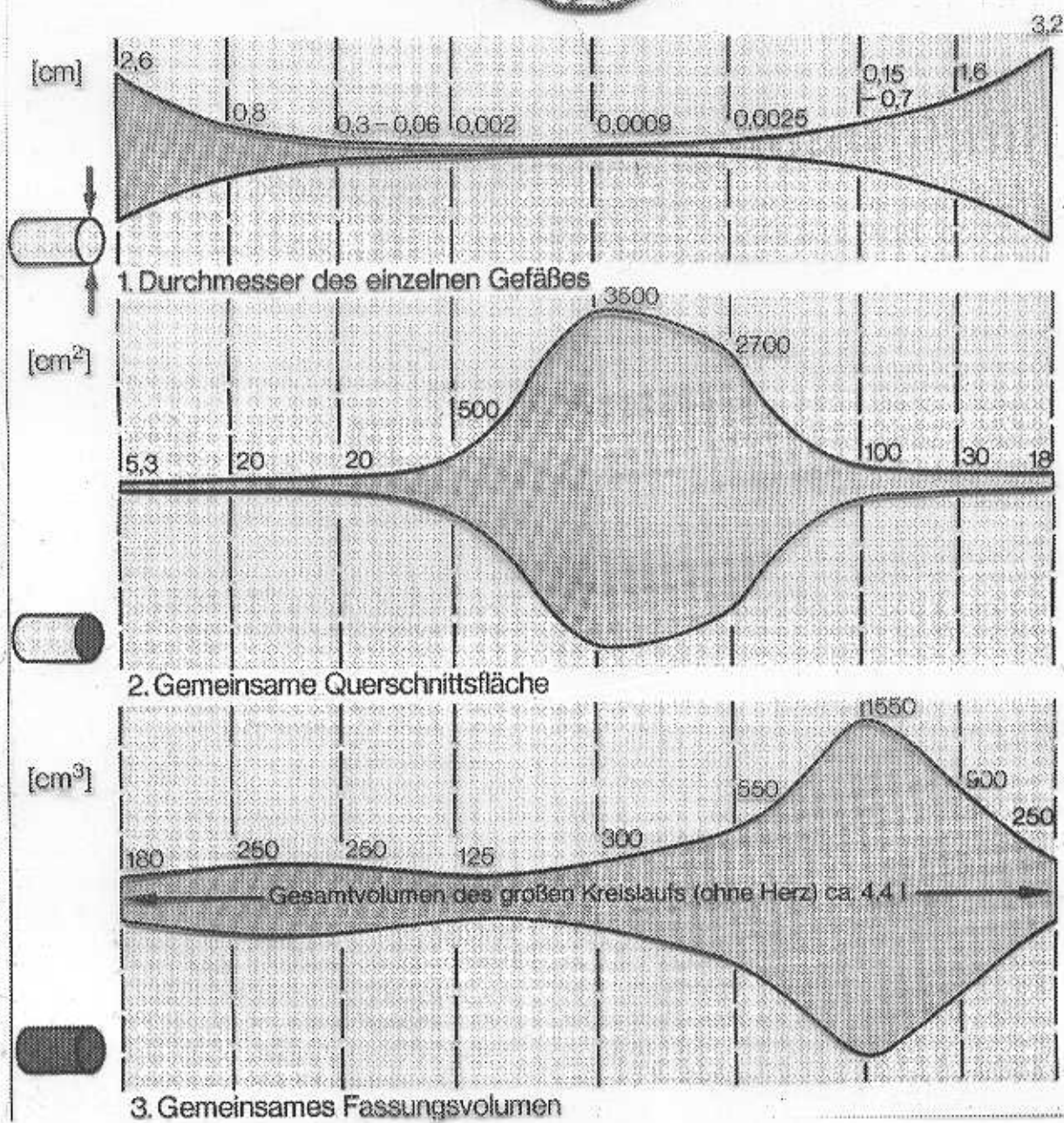
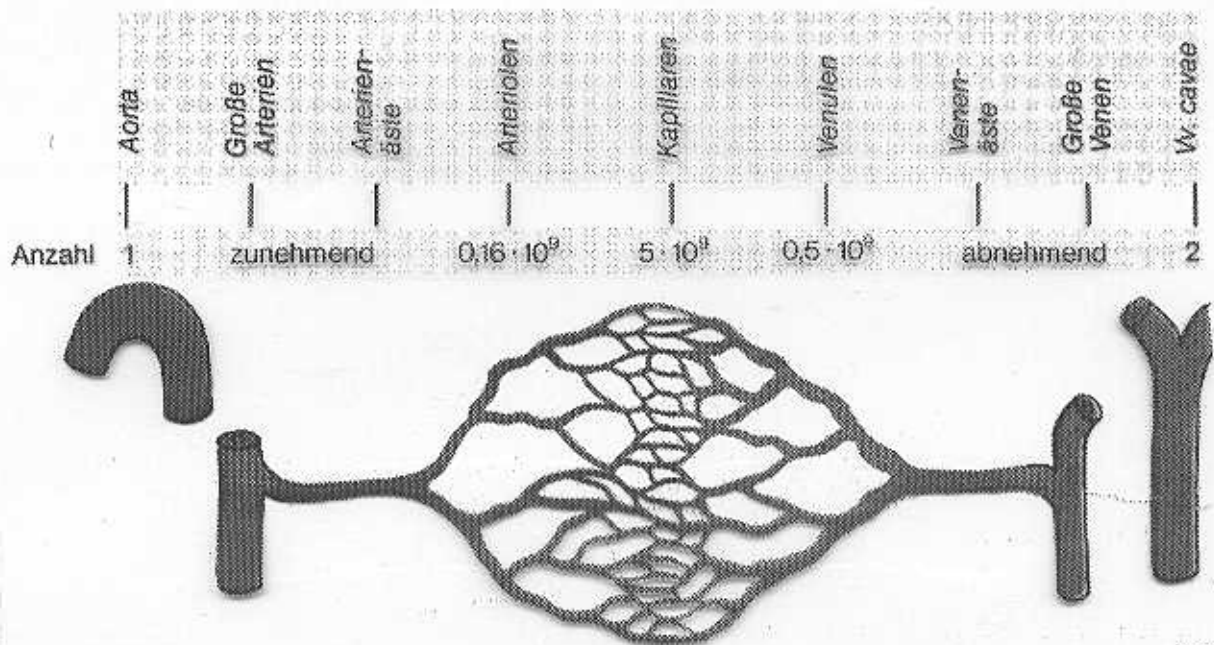
V
 Organdurchblutung in % vom Herzzeitvolumen (in Ruhe 5,5 l/min bei Menschen mit 70 kg Gewicht)

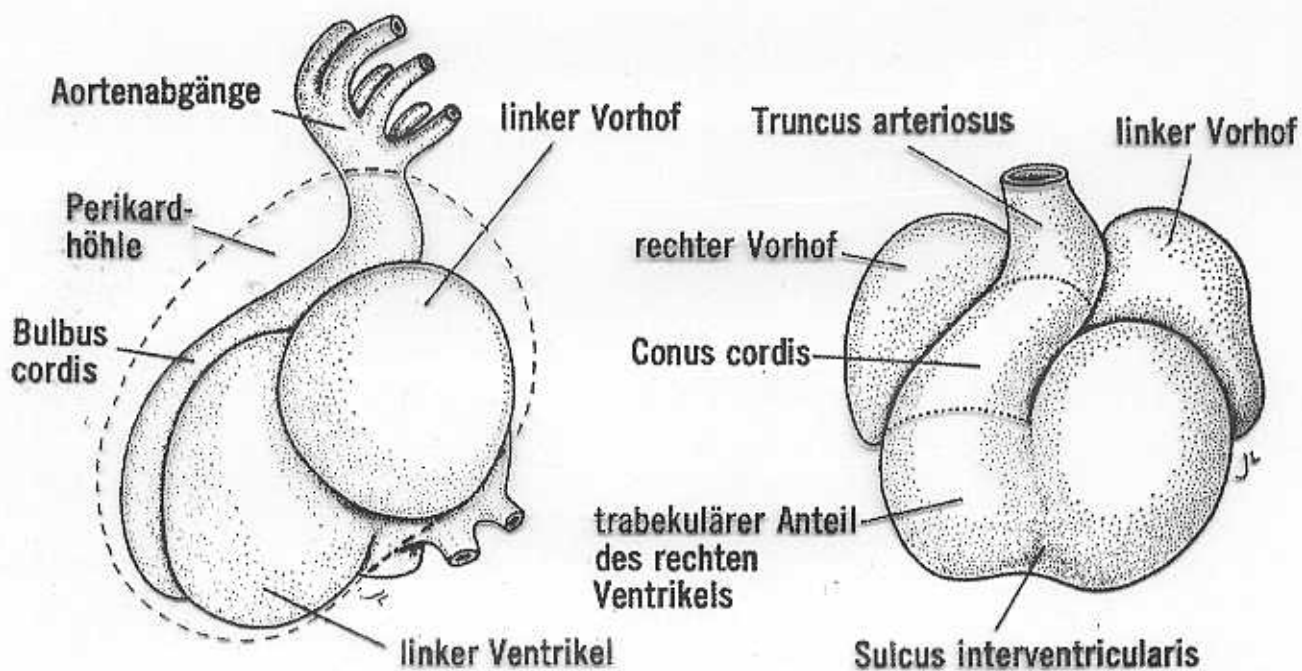
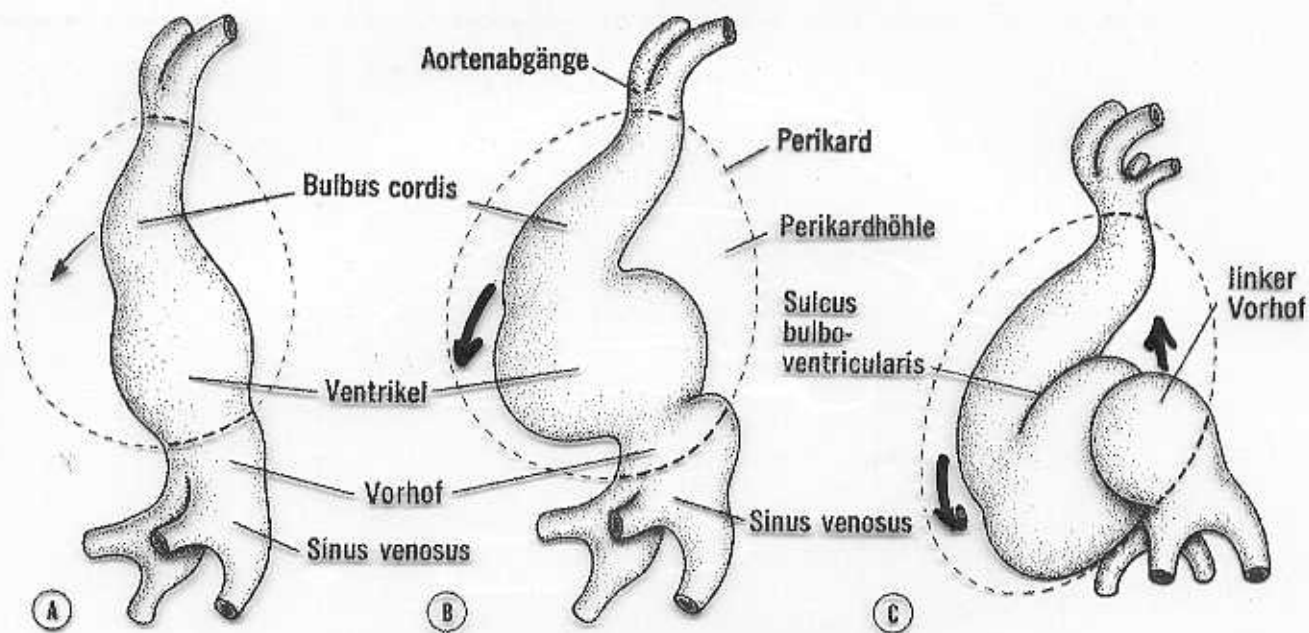
QO_2
 O_2 -Verbrauch der Organe in % des gesamten O_2 -Verbrauchs (0,25 l/min)

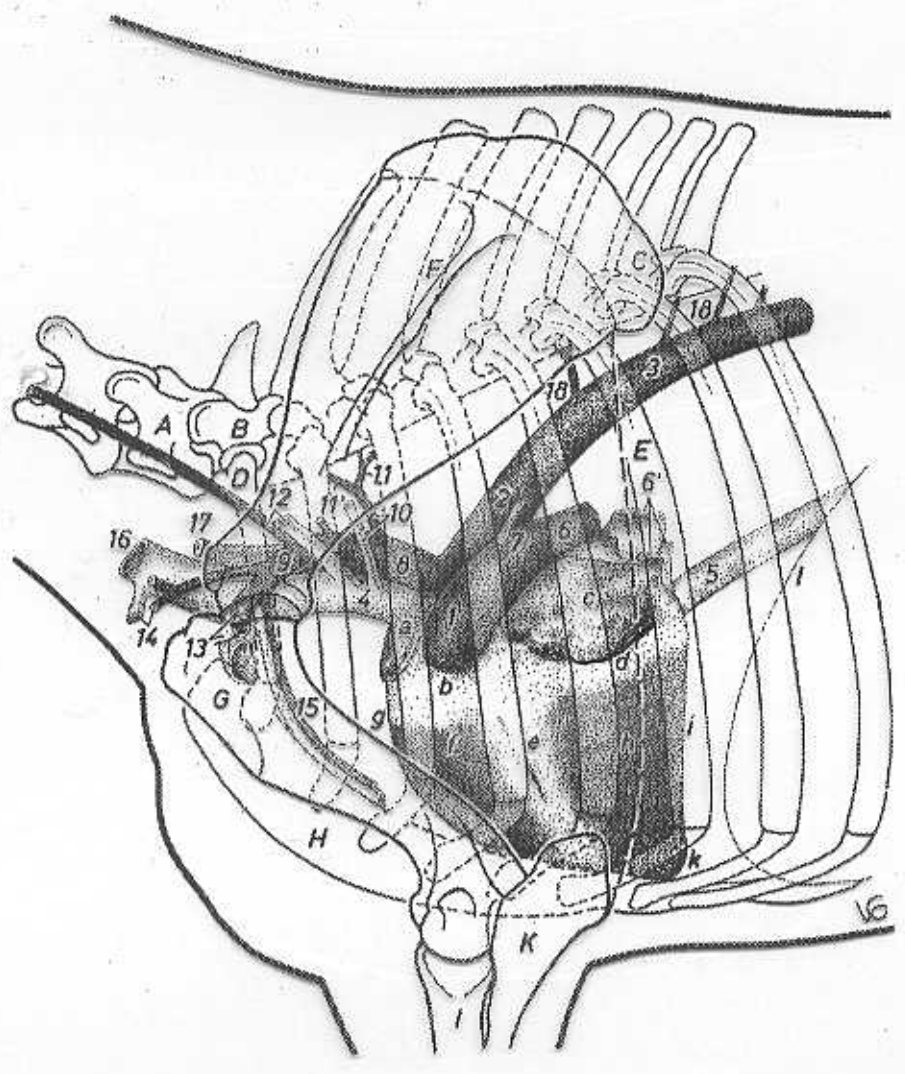
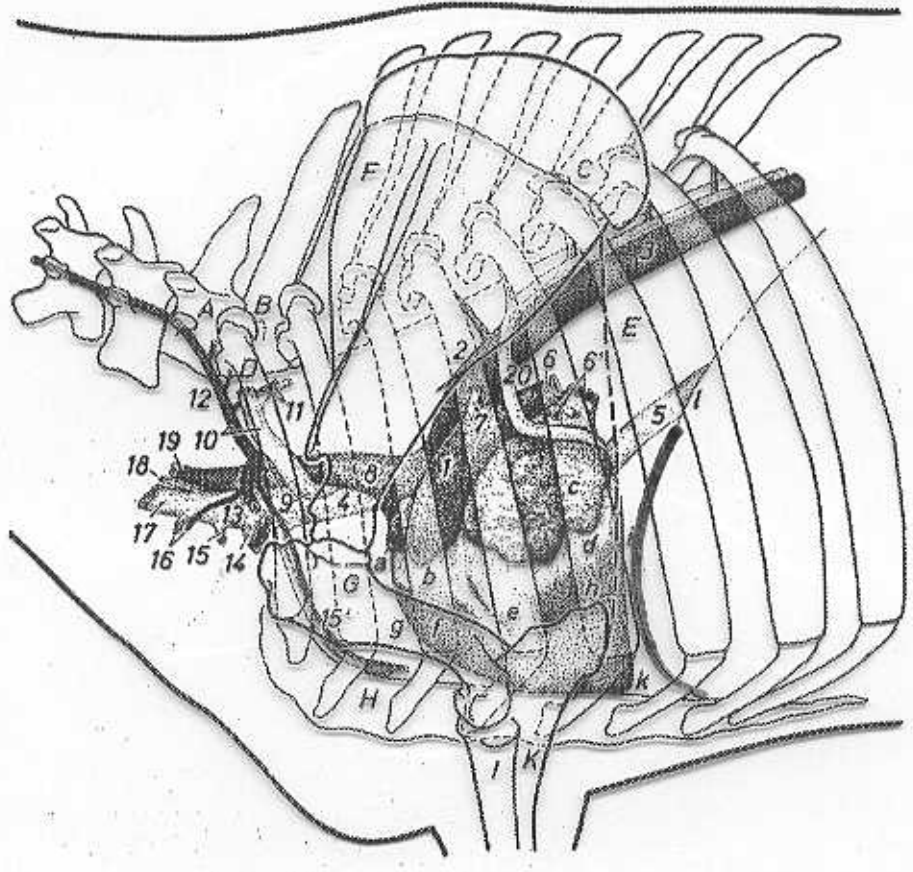
Umverteilung:
 mehr Verdauung oder
 mehr körperliche Arbeit

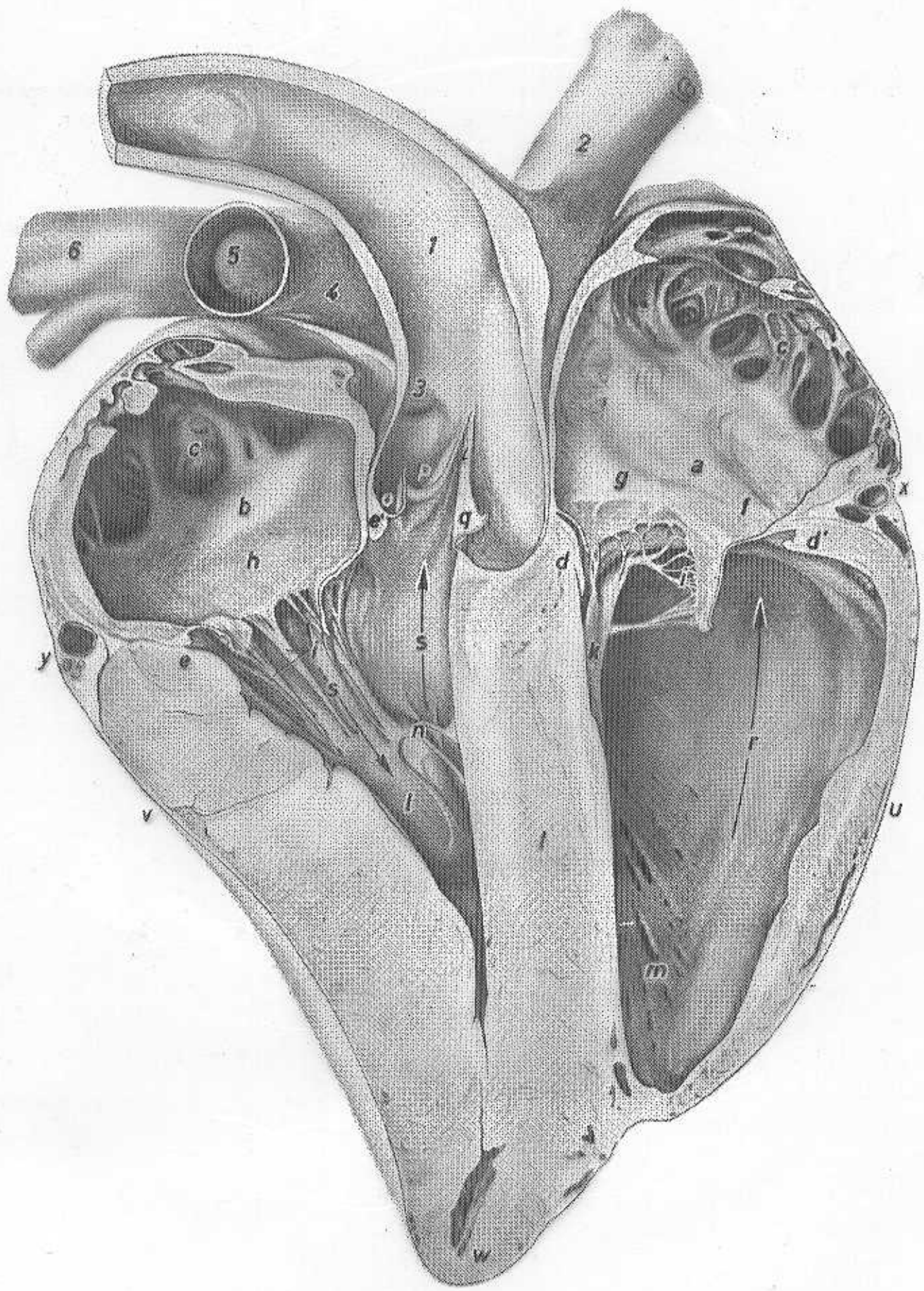
Niederdrucksystem
 (Reservoirfunktion)

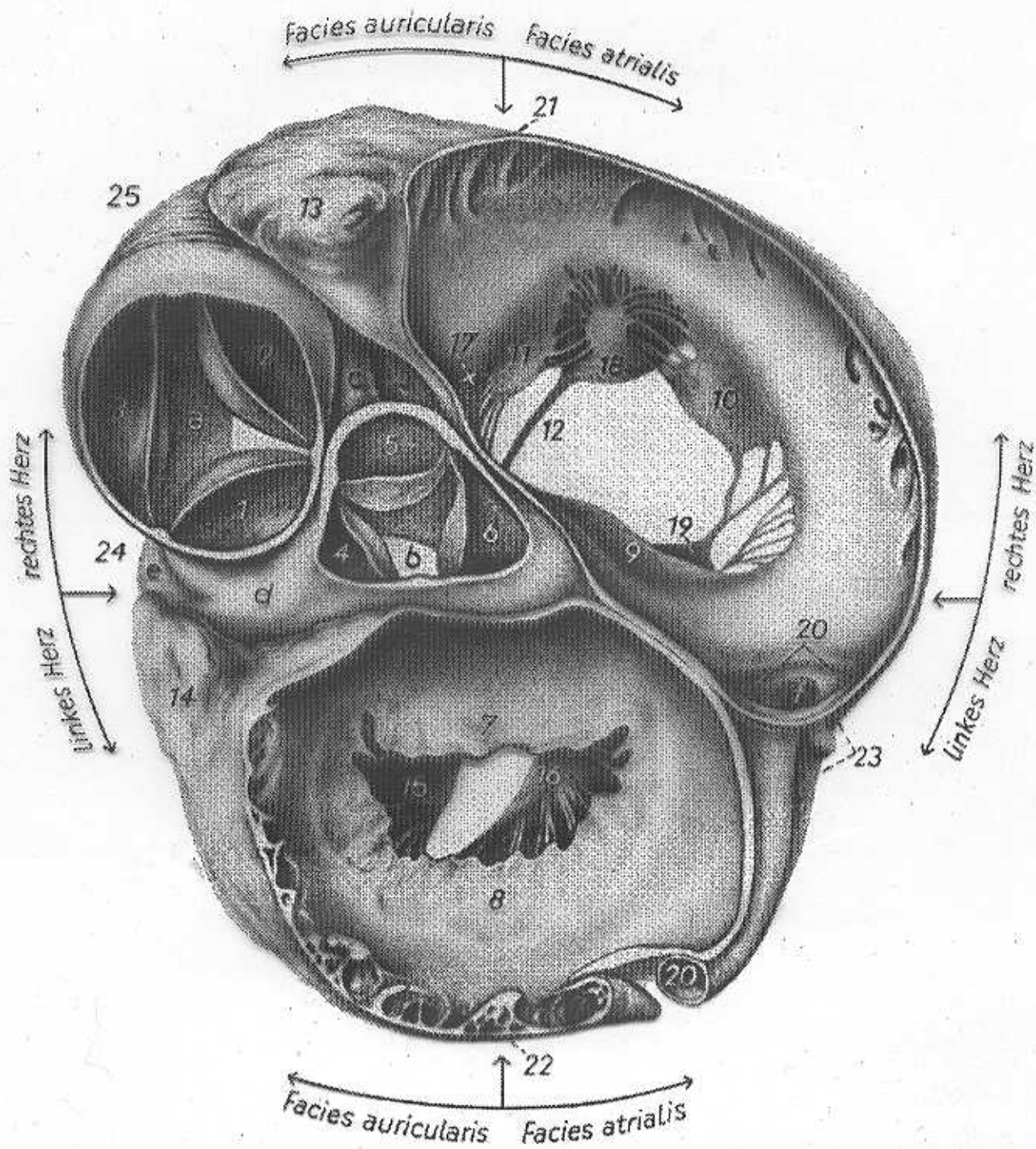
Hochdrucksystem
 (Versorgungsfunktion)

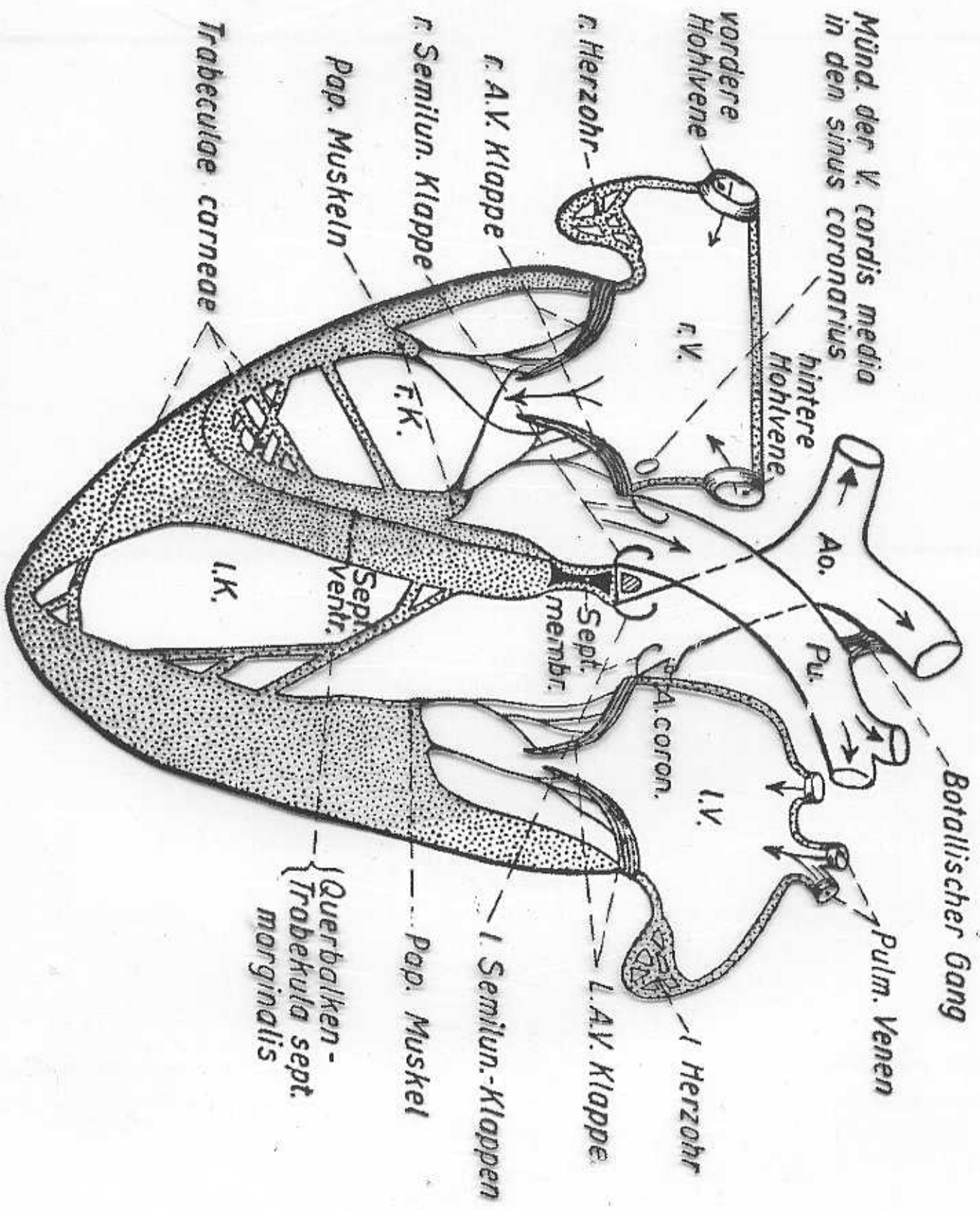












Trabeculae carneae

r. Semilun. Klappe

r. A.V. Klappe

r. Herzohr

vordere Hohlvene

Münd. der V. cordis media in den sinus coronarius

hintere Hohlvene

r. V.

r. K.

Ao.

Pu.

Botallischer Gang

Pulm. Venen

l. V.

A. coron.

Sept. membr.

Sept. Ventr.

l. K.

Pap. Muskel

1 Semilun.-Klappen

Querbalken - Trabekula sept. marginalis

1 Herzohr

L.A.V. Klappe

